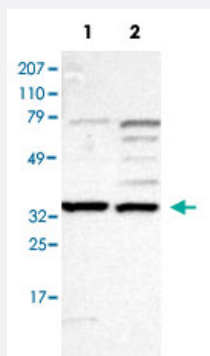


# SLC25A21 polyclonal antibody

Catalog # PAB30234

Size 100 uL

## Applications

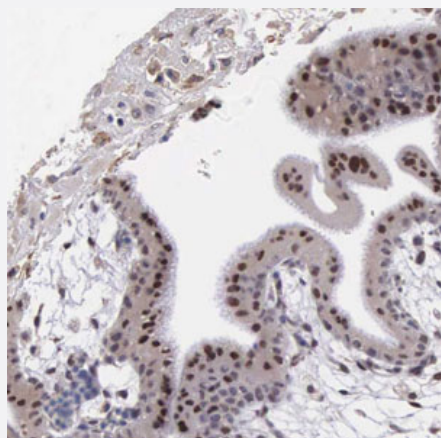


### Western Blot (Cell lysate)

Western Blot (Cell lysate) analysis with SLC25A21 polyclonal antibody (Cat # PAB30234) at 1:250 - 1:500 dilution

Lane 1: Human cell line RT-4

Lane 2: Human cell line EFO-21



### Immunohistochemistry (Formalin/PFA-fixed paraffin-embedded sections)

Immunohistochemical staining (Formalin-fixed paraffin-embedded sections) of human placenta with SLC25A21 polyclonal antibody (Cat # PAB30234) shows strong nuclear positivity in trophoblastic cells at 1:50 - 1:200 dilution.

## Specification

Product Description	Rabbit polyclonal antibody raised against recombinant human SLC25A21.
Immunogen	Recombinant protein corresponding to amino acids of human SLC25A21.
Sequence	PEVSLVREASRQIVAGGSAGLVEICLMHPLDVVKTRFQIQRCAIDPNSYKSLVDSFRMIFQMEGLFGFYKGILPPILAETPKRAVKFFTFEQYKLLGYVSLSPALTFAIAGLGSGLTEAMVNPFEVVKVGL
Host	Rabbit

Reactivity	Human
Form	Liquid
Purification	Antigen affinity purification
Isotype	IgG
Recommend Usage	Immunohistochemistry (Formalin/PFA-fixed paraffin-embedded sections) (1:50-1:200) Western Blot (1:250-1:500) The optimal working dilution should be determined by the end user.
Storage Buffer	In PBS, pH 7.2 (40% glycerol, 0.02% sodium azide)
Storage Instruction	Store at 4°C. For long term storage store at -20°C. Aliquot to avoid repeated freezing and thawing.
Note	This product contains sodium azide: a POISONOUS AND HAZARDOUS SUBSTANCE which should be handled by trained staff only.

## Applications

- Western Blot (Cell lysate)

Western Blot (Cell lysate) analysis with SLC25A21 polyclonal antibody (Cat # PAB30234) at 1:250 - 1:500 dilution

Lane 1: Human cell line RT-4

Lane 2: Human cell line EFO-21

- Immunohistochemistry (Formalin/PFA-fixed paraffin-embedded sections)

Immunohistochemical staining (Formalin-fixed paraffin-embedded sections) of human placenta with SLC25A21 polyclonal antibody (Cat # PAB30234) shows strong nuclear positivity in trophoblastic cells at 1:50 - 1:200 dilution.

## Gene Info — SLC25A21

Entrez GeneID	<a href="#">89874</a>
Protein Accession#	<a href="#">Q9BQT8</a>
Gene Name	SLC25A21
Gene Alias	MGC126570, ODC, ODC1
Gene Description	solute carrier family 25 (mitochondrial oxodicarboxylate carrier), member 21
Omim ID	<a href="#">607571</a>
Gene Ontology	<a href="#">Hyperlink</a>

**Gene Summary**

SLC25A21 is a homolog of the *S. cerevisiae* ODC proteins, mitochondrial carriers that transport C5-C7 oxodicarboxylates across inner mitochondrial membranes. One of the species transported by ODC is 2-oxoadipate, a common intermediate in the catabolism of lysine, tryptophan, and hydroxylysine in mammals. Within mitochondria, 2-oxoadipate is converted into acetyl-CoA.[supplied by OMIM]

**Other Designations**

oxodicarboxylate carrier

**Disease**

- [Cardiovascular Diseases](#)
- [Celiac Disease](#)
- [Diabetes Mellitus](#)
- [Edema](#)
- [Genetic Predisposition to Disease](#)
- [Tobacco Use Disorder](#)