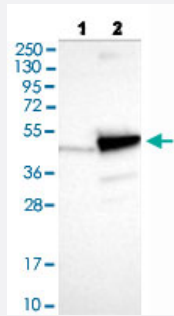


# PNMA2 polyclonal antibody

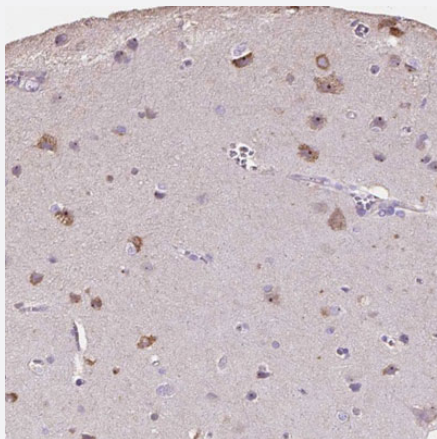
Catalog # PAB30227      Size 100 uL

## Applications



### Western Blot (Transfected lysate)

Western blot analysis of Lane 1: Negative control (vector only transfected HEK293T lysate), Lane 2: Over-expression lysate (Co-expressed with a C-terminal myc-DDK tag (~3.1 kDa) in mammalian HEK293T cells) with PNMA2 polyclonal antibody (Cat # PAB30227).



### Immunohistochemistry (Formalin/PFA-fixed paraffin-embedded sections)

Immunohistochemical staining (Formalin-fixed paraffin-embedded sections) of human cerebral cortex shows moderate cytoplasmic and nucleolar positivity in neuronal cells with PNMA2 polyclonal antibody (Cat # PAB30227).

## Specification

<b>Product Description</b>	Rabbit polyclonal antibody raised against partial recombinant human PNMA2.
<b>Immunogen</b>	Recombinant protein corresponding to amino acids 58 - 206 of human PNMA2.
<b>Sequence</b>	KQENANAVLLELLEDTDVSAIPSEVQGKGGVWVKVIFKTPNQDTEFLERLNLFLKEGQTVSGMFR ALGQEGVSPATVPCISPPELLAHLGQAMAHAPQPLLPMRYRKLRFVSGSAVPAPEEESFEVWLE QATEIVKEWPVTEAEKKRWL
<b>Host</b>	Rabbit

Reactivity	Human
Form	Liquid
Purification	Antigen affinity purification
Isotype	IgG
Recommend Usage	Immunohistochemistry (Formalin/PFA-fixed paraffin-embedded sections) (1:200 - 1:500) Western Blot (1:100 - 1:250) The optimal working dilution should be determined by the end user.
Storage Buffer	In PBS, pH 7.2 (40% glycerol, 0.02% sodium azide).
Storage Instruction	Store at 4°C. For long term storage store at -20°C. Aliquot to avoid repeated freezing and thawing.
Note	This product contains sodium azide: a POISONOUS AND HAZARDOUS SUBSTANCE which should be handled by trained staff only.

## Applications

- Western Blot (Transfected lysate)

Western blot analysis of Lane 1: Negative control (vector only transfected HEK293T lysate), Lane 2: Over-expression lysate (Co-expressed with a C-terminal myc-DDK tag (~3.1 kDa) in mammalian HEK293T cells) with PNMA2 polyclonal antibody (Cat # PAB30227).

- Immunohistochemistry (Formalin/PFA-fixed paraffin-embedded sections)

Immunohistochemical staining (Formalin-fixed paraffin-embedded sections) of human cerebral cortex shows moderate cytoplasmic and nucleolar positivity in neuronal cells with PNMA2 polyclonal antibody (Cat # PAB30227).

## Gene Info — PNMA2

Entrez GeneID	<a href="#">10687</a>
Protein Accession#	<a href="#">Q9UL42</a>
Gene Name	PNMA2
Gene Alias	KIAA0883, MA2, MM2, RGAG2
Gene Description	paraneoplastic antigen MA2
Omim ID	<a href="#">603970</a>
Gene Ontology	<a href="#">Hyperlink</a>

**Other Designations**

onconeuronal antigen MA2|paraneoplastic neuronal antigen|retrotransposon gag domain containing 2

---