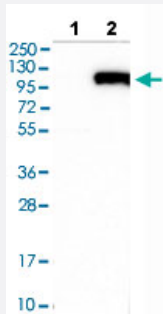


FBLN1 polyclonal antibody

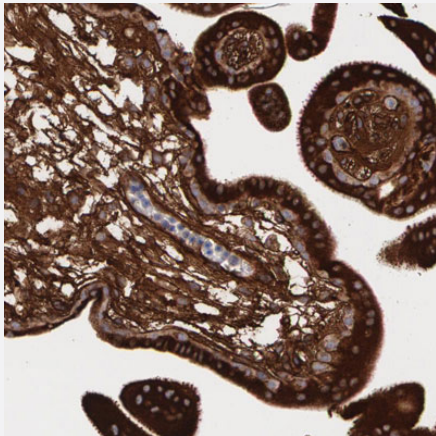
Catalog # PAB30219 Size 100 uL

Applications



Western Blot (Transfected lysate)

Western blot analysis of Lane 1: Negative control (vector only transfected HEK293T lysate), Lane 2: Over-expression lysate (Co-expressed with a C-terminal myc-DDK tag (~3.1 kDa) in mammalian HEK293T cells) with FBLN1 polyclonal antibody (Cat # PAB30219).



Immunohistochemistry (Formalin/PFA-fixed paraffin-embedded sections)

Immunohistochemical staining (Formalin-fixed paraffin-embedded sections) of human placenta shows strong cytoplasmic positivity in trophoblastic cells and distinct stromal positivity with FBLN1 polyclonal antibody (Cat # PAB30219).

Specification

Product Description	Rabbit polyclonal antibody raised against partial recombinant human FBLN1.
Immunogen	Recombinant protein corresponding to amino acids 266 - 402 of human FBLN1.
Sequence	CESGIHNCLPDFICQNTLGSRFCRPKLQCKSGFIQDALGNCIDINECLSIAPCPIGHTCINTEGSYT CQKNVPNCGRGYHLNEEGTRCVDVDECAPPAEPCGKGHRCVNSPGSFRCECKTGYFFDGISR MCVDVNE
Host	Rabbit

Reactivity	Human
Form	Liquid
Purification	Antigen affinity purification
Isotype	IgG
Recommend Usage	Immunohistochemistry (Formalin/PFA-fixed paraffin-embedded sections) (1:200 - 1:500) Western Blot (1:250 - 1:500) The optimal working dilution should be determined by the end user.
Storage Buffer	In PBS, pH 7.2 (40% glycerol, 0.02% sodium azide).
Storage Instruction	Store at 4°C. For long term storage store at -20°C. Aliquot to avoid repeated freezing and thawing.
Note	This product contains sodium azide: a POISONOUS AND HAZARDOUS SUBSTANCE which should be handled by trained staff only.

Applications

- Western Blot (Transfected lysate)

Western blot analysis of Lane 1: Negative control (vector only transfected HEK293T lysate), Lane 2: Over-expression lysate (Co-expressed with a C-terminal myc-DDK tag (~3.1 kDa) in mammalian HEK293T cells) with FBLN1 polyclonal antibody (Cat # PAB30219).

- Immunohistochemistry (Formalin/PFA-fixed paraffin-embedded sections)

Immunohistochemical staining (Formalin-fixed paraffin-embedded sections) of human placenta shows strong cytoplasmic positivity in trophoblastic cells and distinct stromal positivity with FBLN1 polyclonal antibody (Cat # PAB30219).

Gene Info — FBLN1

Entrez GeneID	2192
Protein Accession#	P23142
Gene Name	FBLN1
Gene Alias	FBLN
Gene Description	fibulin 1
Omim ID	135820 608180
Gene Ontology	Hyperlink

Gene Summary

Fibulin 1 is a secreted glycoprotein that becomes incorporated into a fibrillar extracellular matrix. Calcium-binding is apparently required to mediate its binding to laminin and nidogen. It mediates platelet adhesion via binding fibrinogen. Four splice variants which differ in the 3' end have been identified. Each variant encodes a different isoform, but no functional distinctions have been identified among the four variants. [provided by RefSeq]

Other Designations

OTTHUMP00000028589

Disease

- [Abortion](#)
- [Heart Defects](#)
- [Infertility](#)
- [Tobacco Use Disorder](#)