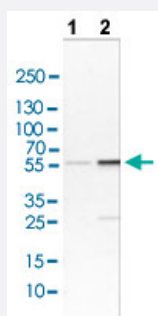


# LYN polyclonal antibody

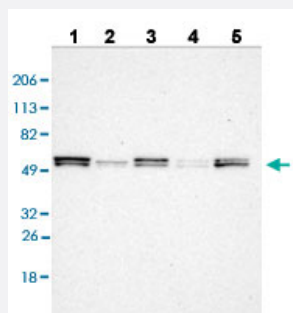
Catalog # PAB30217      Size 100 uL

## Applications



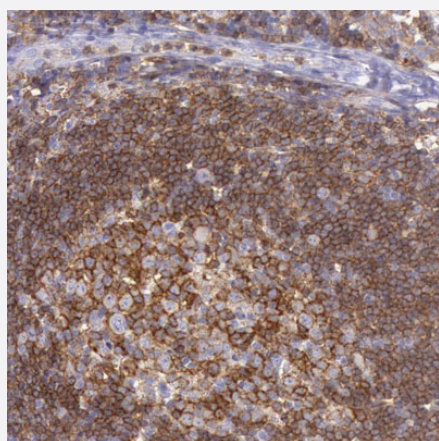
### Western Blot (Cell lysate)

Western blot analysis of Lane 1: NIH/3T3 cell lysate and Lane 2: NBT-II cell lysate with LYN polyclonal antibody (Cat # PAB30217).



### Western Blot

Western blot analysis of Lane 1: RT-4 cell line, Lane 2: U-251MG sp cell line, Lane 3: A-431 cell line, Lane 4: human liver tissue, and Lane 5: human tonsil tissue with LYN polyclonal antibody (Cat # PAB30217).



### Immunohistochemistry (Formalin/PFA-fixed paraffin-embedded sections)

Immunohistochemical staining (Formalin-fixed paraffin-embedded sections) of human lymph node shows moderate cytoplasmic positivity in reaction center cells and lymphoid cells outside reaction center with LYN polyclonal antibody (Cat # PAB30217).

## Specification

Product Description	Rabbit polyclonal antibody raised against partial recombinant human LYN.
Immunogen	Recombinant protein corresponding to amino acids 7 - 147 of human LYN.
Sequence	KGKDSLSDDGVDLKTQPVRNTERTIYVRDPTSNKQQRVPESQLLPGQRFQTKDP EEGD MVA L PYDGIHPDDL SFKKGEKMKVLEEHGEWWKAKSLLTKKEGFIPSNYAKLNTLETEEWFFKDITR KDAERQL LAPG
Host	Rabbit
Reactivity	Human, Mouse, Rat
Form	Liquid
Purification	Antigen affinity purification
Isotype	IgG
Recommend Usage	Immunohistochemistry (Formalin/PFA-fixed paraffin-embedded sections) (1:200 - 1:500) Western Blot (1:100 - 1:250) The optimal working dilution should be determined by the end user.
Storage Buffer	In PBS, pH 7.2 (40% glycerol, 0.02% sodium azide).
Storage Instruction	Store at 4°C. For long term storage store at -20°C. Aliquot to avoid repeated freezing and thawing.
Note	This product contains sodium azide: a POISONOUS AND HAZARDOUS SUBSTANCE which should be handled by trained staff only.

## Applications

- Western Blot (Cell lysate)

Western blot analysis of Lane 1: NIH/3T3 cell lysate and Lane 2: NBT-II cell lysate with LYN polyclonal antibody (Cat # PAB30217).

- Western Blot

Western blot analysis of Lane 1: RT-4 cell line, Lane 2: U-251MG sp cell line, Lane 3: A-431 cell line, Lane 4: human liver tissue, and Lane 5: human tonsil tissue with LYN polyclonal antibody (Cat # PAB30217).

- Immunohistochemistry (Formalin/PFA-fixed paraffin-embedded sections)

Immunohistochemical staining (Formalin-fixed paraffin-embedded sections) of human lymph node shows moderate cytoplasmic positivity in reaction center cells and lymphoid cells outside reaction center with LYN polyclonal antibody (Cat # PAB30217).

## Gene Info — LYN

Entrez GeneID	<a href="#">4067</a>
Protein Accession#	<a href="#">P07948</a>
Gene Name	LYN
Gene Alias	FLJ26625, JTK8
Gene Description	v-yes-1 Yamaguchi sarcoma viral related oncogene homolog
Omim ID	<a href="#">165120</a>
Gene Ontology	<a href="#">Hyperlink</a>
Other Designations	Yamaguchi sarcoma viral (v-yes-1) oncogene homolog Yamaguchi sarcoma viral (v-yes-1) related oncogene homolog

## Pathway

- [B cell receptor signaling pathway](#)
- [Chemokine signaling pathway](#)
- [Epithelial cell signaling in Helicobacter pylori infection](#)
- [Fc epsilon RI signaling pathway](#)
- [Fc gamma R-mediated phagocytosis](#)
- [Long-term depression](#)

## Disease

- [Diabetes Mellitus](#)
- [Genetic Predisposition to Disease](#)
- [HIV Infections](#)
- [Lupus Erythematosus](#)
- [Mental Disorders](#)
- [Tobacco Use Disorder](#)