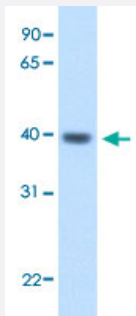


ITGB1BP2 polyclonal antibody

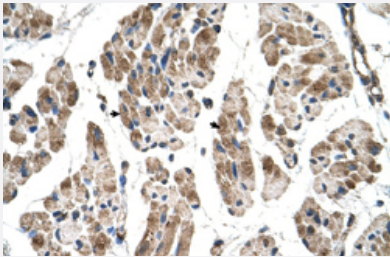
Catalog # PAB30159 Size 100 uL

Applications



Western Blot (Tissue lysate)

Western Blot analysis of human fetal heart tissue lysate with ITGB1BP2 polyclonal antibody (Cat # PAB30159) at 2.5 ug/mL working concentration.



Immunohistochemistry (Formalin/PFA-fixed paraffin-embedded sections)

Immunohistochemical staining (Formalin-fixed paraffin-embedded sections) of human muscle with ITGB1BP2 polyclonal antibody (Cat # PAB30159) at 4-8 ug/mL working concentration.

Specification

Product Description	Rabbit polyclonal antibody raised against synthetic peptide of human ITGB1BP2.
Immunogen	A synthetic peptide corresponding to N-terminus of human ITGB1BP2.
Sequence	MSLLCRNKGCGQHFDPTNLPDSCCHHPGVPIFHDALKGWSCCRKRTVDF
Host	Rabbit
Theoretical MW (kDa)	38
Reactivity	Human
Form	Liquid

Purification	Protein A purification
Recommend Usage	Immunohistochemistry (Formalin/PFA-fixed paraffin-embedded sections) (4-8 ug/mL) Western Blot (2.5 ug/mL) The optimal working dilution should be determined by the end user.
Storage Buffer	In PBS (2% sucrose, 0.09% sodium azide).
Storage Instruction	Store at 4°C. For long term storage store at -20°C. Aliquot to avoid repeated freezing and thawing.
Note	This product contains sodium azide: a POISONOUS AND HAZARDOUS SUBSTANCE which should be handled by trained staff only.

Applications

- Western Blot (Tissue lysate)

Western Blot analysis of human fetal heart tissue lysate with ITGB1BP2 polyclonal antibody (Cat # PAB30159) at 2.5 ug/mL working concentration.

- Immunohistochemistry (Formalin/PFA-fixed paraffin-embedded sections)

Immunohistochemical staining (Formalin-fixed paraffin-embedded sections) of human muscle with ITGB1BP2 polyclonal antibody (Cat # PAB30159) at 4-8 ug/mL working concentration.

Gene Info — ITGB1BP2

Entrez GeneID	26548
GeneBank Accession#	NM_012278
Protein Accession#	NP_036410.Q9UKP3
Gene Name	ITGB1BP2
Gene Alias	CHORDC3, ITGB1BP, MELUSIN, MGC119214, MSTP015
Gene Description	integrin beta 1 binding protein (melusin) 2
Omim ID	300332
Gene Ontology	Hyperlink
Other Designations	OTTHUMP00000023501 integrin beta 1 binding protein 2

Disease

- [Cardiomyopathy](#)
- [Genetic Predisposition to Disease](#)
- [Hypertension](#)