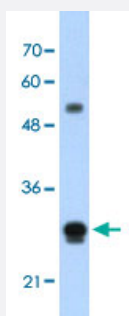


IGSF1 polyclonal antibody

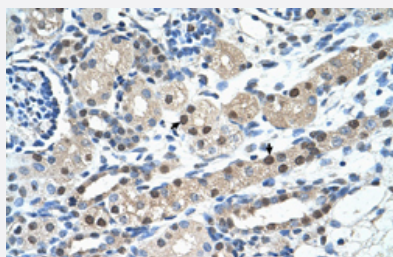
Catalog # PAB30152 Size 100 uL

Applications



Western Blot (Cell lysate)

Western Blot analysis of HepG2 cell lysate with IGSF1 polyclonal antibody (Cat # PAB30152) at 1.25 ug/mL working concentration.



Immunohistochemistry (Formalin/PFA-fixed paraffin-embedded sections)

Immunohistochemical staining (Formalin-fixed paraffin-embedded sections) of human kidney with IGSF1 polyclonal antibody (Cat # PAB30152) at 4-8 ug/mL working concentration.

Specification

Product Description	Rabbit polyclonal antibody raised against synthetic peptide of human IGSF1.
Immunogen	A synthetic peptide corresponding to N-terminus of human IGSF1.
Sequence	LCHGWLQDLVFMLFKEGYAEPVDYQVPTGTMAIFSIDNLTPEDEGVYICR
Host	Rabbit
Theoretical MW (kDa)	27
Reactivity	Human
Form	Liquid

Purification	Protein A purification
Recommend Usage	Immunohistochemistry (Formalin/PFA-fixed paraffin-embedded sections) (4-8 ug/mL) Western Blot (1.25 ug/mL) The optimal working dilution should be determined by the end user.
Storage Buffer	In PBS (2% sucrose, 0.09% sodium azide).
Storage Instruction	Store at 4°C. For long term storage store at -20°C. Aliquot to avoid repeated freezing and thawing.
Note	This product contains sodium azide: a POISONOUS AND HAZARDOUS SUBSTANCE which should be handled by trained staff only.

Applications

- Western Blot (Cell lysate)

Western Blot analysis of HepG2 cell lysate with IGSF1 polyclonal antibody (Cat # PAB30152) at 1.25 ug/mL working concentration.

- Immunohistochemistry (Formalin/PFA-fixed paraffin-embedded sections)

Immunohistochemical staining (Formalin-fixed paraffin-embedded sections) of human kidney with IGSF1 polyclonal antibody (Cat # PAB30152) at 4-8 ug/mL working concentration.

Gene Info — IGSF1

Entrez GeneID	3547
GeneBank Accession#	NM_205833
Protein Accession#	NP_991402;Q8N6C5
Gene Name	IGSF1
Gene Alias	IGCD1, IGDC1, INHBP, KIAA0364, MGC75490, PGSF2
Gene Description	immunoglobulin superfamily, member 1
Omim ID	300137
Gene Ontology	Hyperlink
Gene Summary	Members of the immunoglobulin (Ig) superfamily (see MIM 147100), which includes IGSF1, have a variety of functions, but all appear to play a role in cell recognition and the regulation of cell behavior.[supplied by OMIM]

Other Designations

OTTHUMP00000024029|OTTHUMP00000024030|OTTHUMP00000024031|immunoglobulin-like domain-containing 1
