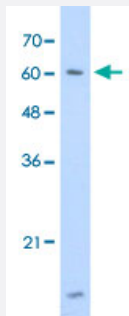


# HNRNPL polyclonal antibody

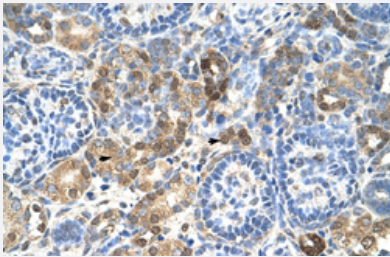
Catalog # PAB30142      Size 100 uL

## Applications



### Western Blot (Cell lysate)

Western Blot analysis of HepG2 cell lysate with HNRNPL polyclonal antibody (Cat # PAB30142) at 1.25 ug/mL working concentration.



### Immunohistochemistry (Formalin/PFA-fixed paraffin-embedded sections)

Immunohistochemical staining (Formalin-fixed paraffin-embedded sections) of human kidney with HNRNPL polyclonal antibody (Cat # PAB30142) at 4-8 ug/mL working concentration.

## Specification

|                             |  |
|-----------------------------|--|
| <b>Product Description</b>  | Rabbit polyclonal antibody raised against synthetic peptide of human HNRNPL. |
| <b>Immunogen</b>            | A synthetic peptide corresponding to N-terminus of human HNRNPL.             |
| <b>Sequence</b>             | RRRSGAMVKMAAAGGGGGGGGRYYGGGSEGGRAPKRLKTDNAGDQHGGGGG                          |
| <b>Host</b>                 | Rabbit   |
| <b>Theoretical MW (kDa)</b> | 65   |
| <b>Reactivity</b>           | Human  |
| <b>Form</b>                 | Liquid   |

|                     |   |
|---------------------|---|
| Purification        | Protein A purification  |
| Recommend Usage     | Immunohistochemistry (Formalin/PFA-fixed paraffin-embedded sections) (4-8 ug/mL)<br>Western Blot (1.25 ug/mL)<br>The optimal working dilution should be determined by the end user. |
| Storage Buffer      | In PBS (2% sucrose, 0.09% sodium azide).  |
| Storage Instruction | Store at 4°C. For long term storage store at -20°C.<br>Aliquot to avoid repeated freezing and thawing.  |
| Note                | This product contains sodium azide: a POISONOUS AND HAZARDOUS SUBSTANCE which should be handled by trained staff only.  |

## Applications

- Western Blot (Cell lysate)

Western Blot analysis of HepG2 cell lysate with HNRNPL polyclonal antibody (Cat # PAB30142) at 1.25 ug/mL working concentration.

- Immunohistochemistry (Formalin/PFA-fixed paraffin-embedded sections)

Immunohistochemical staining (Formalin-fixed paraffin-embedded sections) of human kidney with HNRNPL polyclonal antibody (Cat # PAB30142) at 4-8 ug/mL working concentration.

## Gene Info — HNRNPL

|                     |   |
|---------------------|---|
| Entrez GeneID       | <a href="#">3191</a>                      |
| GeneBank Accession# | <a href="#">NM_001533</a>                 |
| Protein Accession#  | <a href="#">NP_001524:P14866</a>          |
| Gene Name           | HNRNPL                                    |
| Gene Alias          | FLJ35509, HNRPL, P/OKcl.14, hnRNP-L       |
| Gene Description    | heterogeneous nuclear ribonucleoprotein L |
| Omim ID             | <a href="#">603083</a>                    |
| Gene Ontology       | <a href="#">Hyperlink</a>                 |

**Gene Summary**

Heterogeneous nuclear RNAs (hnRNAs) which include mRNA precursors and mature mRNAs are associated with specific proteins to form heterogeneous ribonucleoprotein (hnRNP) complexes. Heterogeneous nuclear ribonucleoprotein L is among the proteins that are stably associated with hnRNP complexes and along with other hnRNP proteins is likely to play a major role in the formation, packaging, processing, and function of mRNA. Heterogeneous nuclear ribonucleoprotein L is present in the nucleoplasm as part of the HNRNP complex. HNRNP proteins have also been identified outside of the nucleoplasm. Exchange of hnRNP for mRNA-binding proteins accompanies transport of mRNA from the nucleus to the cytoplasm. Since HNRNP proteins have been shown to shuttle between the nucleus and the cytoplasm, it is possible that they also have cytoplasmic functions. Two transcript variants encoding different isoforms have been found for this gene. [provided by RefSeq]

**Other Designations**

-