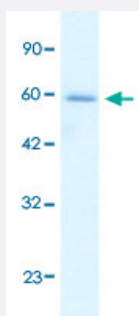


HCLS1 polyclonal antibody

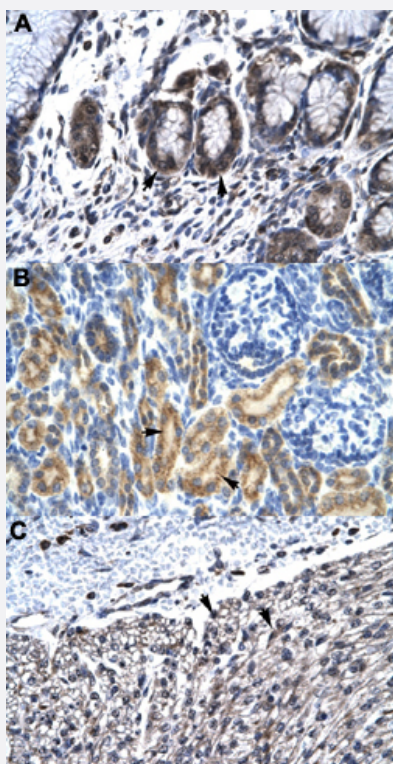
Catalog # PAB30128 Size 100 uL

Applications



Western Blot (Cell lysate)

Western Blot analysis of Jurkat cell lysate with HCLS1 polyclonal antibody (Cat # PAB30128) at 1.25 ug/mL working concentration.



Immunohistochemistry (Formalin/PFA-fixed paraffin-embedded sections)

Immunohistochemical staining (Formalin-fixed paraffin-embedded sections) of human stomach (A), human kidney (B) and human heart (C) with HCLS1 polyclonal antibody (Cat # PAB30128) at 4-8 ug/mL working concentration.

Specification

Product Description

Rabbit polyclonal antibody raised against synthetic peptide of human HCLS1.

Immunogen	A synthetic peptide corresponding to N-terminus of human HCLS1.
Sequence	VNDISEKEQRWGAKTIEGSGRTEHINIHLRNKVSEEHDVLRKKEMESGP
Host	Rabbit
Theoretical MW (kDa)	54
Reactivity	Human
Form	Liquid
Purification	Affinity purification
Recommend Usage	Immunohistochemistry (Formalin/PFA-fixed paraffin-embedded sections) (4-8 ug/mL) Western Blot (1.25 ug/mL) The optimal working dilution should be determined by the end user.
Storage Buffer	In PBS (2% sucrose, 0.09% sodium azide).
Storage Instruction	Store at 4°C. For long term storage store at -20°C. Aliquot to avoid repeated freezing and thawing.
Note	This product contains sodium azide: a POISONOUS AND HAZARDOUS SUBSTANCE which should be handled by trained staff only.

Applications

- Western Blot (Cell lysate)

Western Blot analysis of Jurkat cell lysate with HCLS1 polyclonal antibody (Cat # PAB30128) at 1.25 ug/mL working concentration.

- Immunohistochemistry (Formalin/PFA-fixed paraffin-embedded sections)

Immunohistochemical staining (Formalin-fixed paraffin-embedded sections) of human stomach (A), human kidney (B) and human heart (C) with HCLS1 polyclonal antibody (Cat # PAB30128) at 4-8 ug/mL working concentration.

Gene Info — HCLS1

Entrez GeneID	3059
GeneBank Accession#	NM_005335
Protein Accession#	NP_005326:P14317
Gene Name	HCLS1

Gene Alias	CTTNL, HS1
Gene Description	hematopoietic cell-specific Lyn substrate 1
Omim ID	601306
Gene Ontology	Hyperlink
Other Designations	cortactin-like

Pathway

- [Pathogenic Escherichia coli infection - EHEC](#)
- [Tight junction](#)

Disease

- [Kidney Failure](#)
- [Lupus Erythematosus](#)