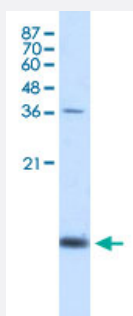


HBZ polyclonal antibody

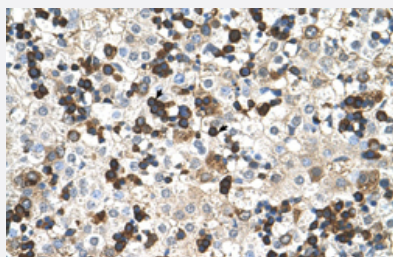
Catalog # PAB30127 Size 100 uL

Applications



Western Blot (Cell lysate)

Western Blot analysis of K562 cell lysate with HBZ polyclonal antibody (Cat # PAB30127) at 1.25 ug/mL working concentration.



Immunohistochemistry (Formalin/PFA-fixed paraffin-embedded sections)

Immunohistochemical staining (Formalin-fixed paraffin-embedded sections) of human liver with HBZ polyclonal antibody (Cat # PAB30127) at 4-8 ug/mL working concentration.

Specification

Product Description	Rabbit polyclonal antibody raised against synthetic peptide of human HBZ.
Immunogen	A synthetic peptide corresponding to N-terminus of human HBZ.
Sequence	ERLFLSHPQTKTYFPHFDLHPGSAQLRAHGSKVVAAVGDAVKSIDDIGGA
Host	Rabbit
Theoretical MW (kDa)	16
Reactivity	Human
Form	Liquid

Purification	Protein A purification
Recommend Usage	Immunohistochemistry (Formalin/PFA-fixed paraffin-embedded sections) (4-8 ug/mL) Western Blot (1.25 ug/mL) The optimal working dilution should be determined by the end user.
Storage Buffer	In PBS (2% sucrose, 0.09% sodium azide).
Storage Instruction	Store at 4°C. For long term storage store at -20°C. Aliquot to avoid repeated freezing and thawing.
Note	This product contains sodium azide: a POISONOUS AND HAZARDOUS SUBSTANCE which should be handled by trained staff only.

Applications

- Western Blot (Cell lysate)

Western Blot analysis of K562 cell lysate with HBZ polyclonal antibody (Cat # PAB30127) at 1.25 ug/mL working concentration.

- Immunohistochemistry (Formalin/PFA-fixed paraffin-embedded sections)

Immunohistochemical staining (Formalin-fixed paraffin-embedded sections) of human liver with HBZ polyclonal antibody (Cat # PAB30127) at 4-8 ug/mL working concentration.

Gene Info — HBZ

Entrez GeneID	3050
GeneBank Accession#	NM_005332
Protein Accession#	NP_005323;P02008
Gene Name	HBZ
Gene Alias	-
Gene Description	hemoglobin, zeta
Omim ID	142310
Gene Ontology	Hyperlink

Gene Summary

Zeta-globin is an alpha-like hemoglobin. The zeta-globin polypeptide is synthesized in the yolk sac of the early embryo, while alpha-globin is produced throughout fetal and adult life. The zeta-globin gene is a member of the human alpha-globin gene cluster that includes five functional genes and two pseudogenes. The order of genes is: 5' - zeta - pseudozeta - mu - pseudoalpha-1 - alpha-2 - alpha-1 - theta1 - 3'. [provided by RefSeq]

Other Designations

zeta globin