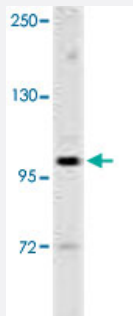


Epha6 polyclonal antibody

Catalog # PAB3012

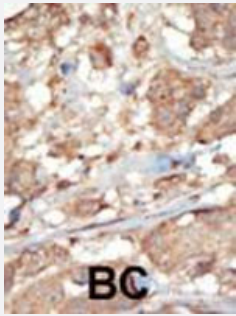
Size 400 uL

Applications



Western Blot (Tissue lysate)

Western blot analysis of Epha6 polyclonal antibody (Cat # PAB3012) in mouse stomach tissue lysates (35 ug/lane).



Immunohistochemistry (Formalin/PFA-fixed paraffin-embedded sections)

Formalin-fixed and paraffin-embedded human breast carcinoma tissue reacted with Epha6 polyclonal antibody (Cat # PAB3012), which was peroxidase-conjugated to the secondary antibody, followed by AEC staining. This data demonstrates the use of this antibody for immunohistochemistry; clinical relevance has not been evaluated.

Specification

Product Description	Rabbit polyclonal antibody raised against synthetic peptide of Epha6.
Immunogen	A synthetic peptide (conjugated with KLH) corresponding to C-terminus of mouse Epha6.
Host	Rabbit
Reactivity	Human, Mouse
Form	Liquid
Purification	Protein G purification

Recommend Usage	Western Blot (1:1000) Immunohistochemistry (1:50-100) The optimal working dilution should be determined by the end user.
Storage Buffer	In PBS (0.09% sodium azide)
Storage Instruction	Store at 4°C. For long term storage store at -20°C. Aliquot to avoid repeated freezing and thawing.
Note	This product contains sodium azide: a POISONOUS AND HAZARDOUS SUBSTANCE which should be handled by trained staff only.

Applications

- Western Blot (Tissue lysate)

Western blot analysis of EphA6 polyclonal antibody (Cat # PAB3012) in mouse stomach tissue lysates (35 ug/lane).

- Immunohistochemistry (Formalin/PFA-fixed paraffin-embedded sections)

Formalin-fixed and paraffin-embedded human breast carcinoma tissue reacted with EphA6 polyclonal antibody (Cat # PAB3012), which was peroxidase-conjugated to the secondary antibody, followed by AEC staining. This data demonstrates the use of this antibody for immunohistochemistry; clinical relevance has not been evaluated.

Gene Info — EphA6

Entrez GeneID	13840
Protein Accession#	Q62413
Gene Name	Epha6
Gene Alias	Ehk2, Hek12, m-ehk2
Gene Description	Eph receptor A6
Gene Ontology	Hyperlink
Other Designations	OTTMUSP00000032093

Publication Reference

- [Cloning of m-ehk2 from the murine inner ear, an eph family receptor tyrosine kinase expressed in the developing and adult cochlea.](#)

Lee AM, Navaratnam D, Ichimiya S, Greene MI, Davis JG.

DNA and Cell Biology 1996 Oct; 15(10):817.

Application: IHC, Human, Human inner ear tissues