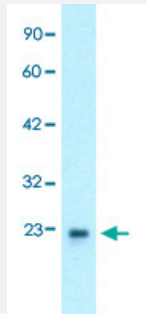


GTF2F2 polyclonal antibody

Catalog # PAB30116

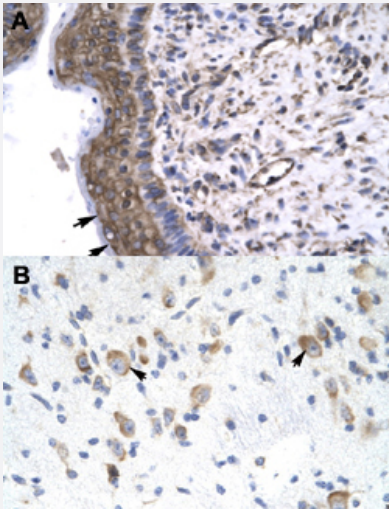
Size 100 uL

Applications



Western Blot (Cell lysate)

Western Blot analysis of HepG2 cell lysate with GTF2F2 polyclonal antibody (Cat # PAB30116) at 0.2-1 ug/mL working concentration.



Immunohistochemistry (Formalin/PFA-fixed paraffin-embedded sections)

Immunohistochemical staining (Formalin-fixed paraffin-embedded sections) of human spermatophore (A) and human brain (B) with GTF2F2 polyclonal antibody (Cat # PAB30116) at 4-8 ug/mL working concentration.

Specification

Product Description	Rabbit polyclonal antibody raised against synthetic peptide of human GTF2F2.
Immunogen	A synthetic peptide corresponding to internal region of human GTF2F2.
Sequence	IESSKPVRLSQQLDKVVTNNYKPVANHQYNIERYKKKEDGKRARADKQ
Host	Rabbit

Theoretical MW (kDa)	28
Reactivity	Human
Form	Liquid
Purification	Affinity purification
Recommend Usage	Immunohistochemistry (Formalin/PFA-fixed paraffin-embedded sections) (4-8 ug/mL) Western Blot (0.2-1 ug/mL) The optimal working dilution should be determined by the end user.
Storage Buffer	In PBS (2% sucrose, 0.09% sodium azide).
Storage Instruction	Store at 4°C. For long term storage store at -20°C. Aliquot to avoid repeated freezing and thawing.
Note	This product contains sodium azide: a POISONOUS AND HAZARDOUS SUBSTANCE which should be handled by trained staff only.

Applications

- Western Blot (Cell lysate)

Western Blot analysis of HepG2 cell lysate with GTF2F2 polyclonal antibody (Cat # PAB30116) at 0.2-1 ug/mL working concentration.

- Immunohistochemistry (Formalin/PFA-fixed paraffin-embedded sections)

Immunohistochemical staining (Formalin-fixed paraffin-embedded sections) of human spermatophore (A) and human brain (B) with GTF2F2 polyclonal antibody (Cat # PAB30116) at 4-8 ug/mL working concentration.

Gene Info — GTF2F2

Entrez GeneID	2963
GeneBank Accession#	NM_004128
Protein Accession#	NP_004119:P13984
Gene Name	GTF2F2
Gene Alias	BTF4, RAP30, TF2F2, TFIIIF
Gene Description	general transcription factor IIIF, polypeptide 2, 30kDa
Omim ID	189969

Gene Ontology[Hyperlink](#)**Gene Summary**

polypeptide 2

Other Designations

general transcription factor IIF, polypeptide 1 (74kD subunit)|general transcription factor IIF, polypeptide 2 (30kD subunit)

Pathway

- [Basal transcription factors](#)