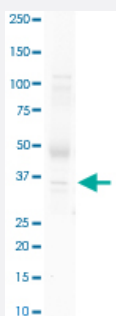


GSX2 polyclonal antibody

Catalog # PAB30113

Size 100 uL

Applications



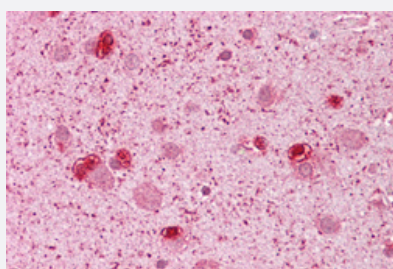
Western Blot (Tissue lysate)

Western Blot analysis of human testis tissue lysate with GSX2 polyclonal antibody (Cat # PAB30113) at 1 ug/mL working concentration.



Western Blot (Tissue lysate)

Western Blot analysis of human fetal liver tissue lysate with GSX2 polyclonal antibody (Cat # PAB30113) at 0.2-1 ug/mL working concentration.



Immunohistochemistry (Formalin/PFA-fixed paraffin-embedded sections)

Immunohistochemical staining (Formalin-fixed paraffin-embedded sections) of human brain with GSX2 polyclonal antibody (Cat # PAB30113).

Specification

Product Description

Rabbit polyclonal antibody raised against synthetic peptide of human GSX2.

Immunogen

A synthetic peptide corresponding to N-terminus of human GSX2.

Sequence	MSRSFYVDSLIIKDTSRPAPSLPEPHPGPDFFIPLGMPPPLVMSVSGPGC
Host	Rabbit
Theoretical MW (kDa)	32
Reactivity	Human
Form	Liquid
Purification	Affinity purification
Recommend Usage	Immunohistochemistry (Formalin/PFA-fixed paraffin-embedded sections) Western Blot The optimal working dilution should be determined by the end user.
Storage Buffer	In PBS (2% sucrose, 0.09% sodium azide).
Storage Instruction	Store at 4°C. For long term storage store at -20°C. Aliquot to avoid repeated freezing and thawing.
Note	This product contains sodium azide: a POISONOUS AND HAZARDOUS SUBSTANCE which should be handled by trained staff only.

Applications

- Western Blot (Tissue lysate)

Western Blot analysis of human testis tissue lysate with GSX2 polyclonal antibody (Cat # PAB30113) at 1 ug/mL working concentration.

- Western Blot (Tissue lysate)

Western Blot analysis of human fetal liver tissue lysate with GSX2 polyclonal antibody (Cat # PAB30113) at 0.2-1 ug/mL working concentration.

- Immunohistochemistry (Formalin/PFA-fixed paraffin-embedded sections)

Immunohistochemical staining (Formalin-fixed paraffin-embedded sections) of human brain with GSX2 polyclonal antibody (Cat # PAB30113).

Gene Info — GSX2

Entrez GeneID	170825
GeneBank Accession#	NM_133267
Protein Accession#	NP_573574;Q9BZM3

Gene Name	GSX2
Gene Alias	GSH2
Gene Description	GS homeobox 2
Gene Ontology	Hyperlink
Other Designations	homeobox protein GSH-2