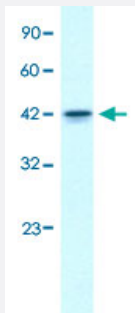


GFI1B polyclonal antibody

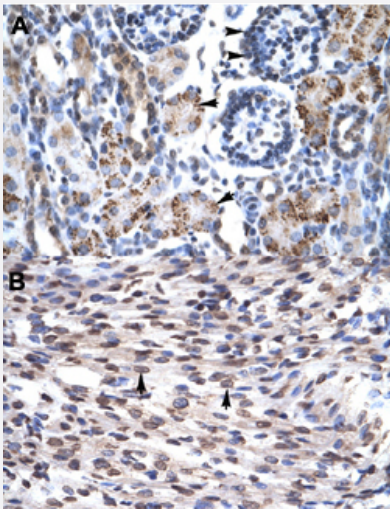
Catalog # PAB30101 Size 100 uL

Applications



Western Blot (Cell lysate)

Western Blot analysis of Jurkat cell lysate with GFI1B polyclonal antibody (Cat # PAB30101) at 0.2-1 ug/mL working concentration.



Immunohistochemistry (Formalin/PFA-fixed paraffin-embedded sections)

Immunohistochemical staining (Formalin-fixed paraffin-embedded sections) of human kidney (A) and human heart (B) with GFI1B polyclonal antibody (Cat # PAB30101) at 4-8 ug/mL working concentration.

Specification

Product Description	Rabbit polyclonal antibody raised against synthetic peptide of human GFI1B.
Immunogen	A synthetic peptide corresponding to N-terminus of human GFI1B.
Sequence	MPRSFLVKSKMAHTYHQPRVQEDEPLWPPALTPVPRDQAPSNPVLSTLF
Host	Rabbit

Theoretical MW (kDa)	38
Reactivity	Human
Form	Liquid
Purification	Affinity purification
Recommend Usage	Immunohistochemistry (Formalin/PFA-fixed paraffin-embedded sections) (4-8 ug/mL) Western Blot (0.2-1 ug/mL) The optimal working dilution should be determined by the end user.
Storage Buffer	In PBS (2% sucrose, 0.09% sodium azide).
Storage Instruction	Store at 4°C. For long term storage store at -20°C. Aliquot to avoid repeated freezing and thawing.
Note	This product contains sodium azide: a POISONOUS AND HAZARDOUS SUBSTANCE which should be handled by trained staff only.

Applications

- Western Blot (Cell lysate)

Western Blot analysis of Jurkat cell lysate with GF11B polyclonal antibody (Cat # PAB30101) at 0.2-1 ug/mL working concentration.

- Immunohistochemistry (Formalin/PFA-fixed paraffin-embedded sections)

Immunohistochemical staining (Formalin-fixed paraffin-embedded sections) of human kidney (A) and human heart (B) with GF11B polyclonal antibody (Cat # PAB30101) at 4-8 ug/mL working concentration.

Gene Info — GF11B

Entrez GeneID	8328
GeneBank Accession#	NM_004188
Protein Accession#	NP_004179;Q5VTD9
Gene Name	GF11B
Gene Alias	-
Gene Description	growth factor independent 1B transcription repressor
Omim ID	604383

Gene Ontology[Hyperlink](#)**Gene Summary**

translocated in CML)

Other Designations

OTTHUMP00000022444|growth factor independent 1B (potential regulator of CDKN1A, translocated in CML)