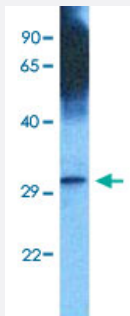


# GEM polyclonal antibody

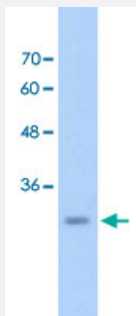
Catalog # PAB30100      Size 100 uL

## Applications



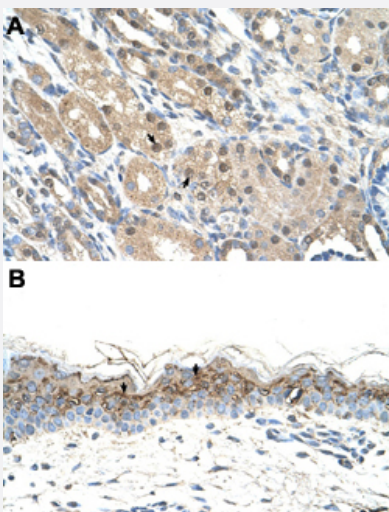
### Western Blot (Tissue lysate)

Western Blot analysis of human stomach tumor tissue lysate with GEM polyclonal antibody (Cat # PAB30100) at 1 ug/mL working concentration.



### Western Blot (Cell lysate)

Western Blot analysis of HepG2 cell lysate with GEM polyclonal antibody (Cat # PAB30100) at 2.5 ug/mL working concentration.



### Immunohistochemistry (Formalin/PFA-fixed paraffin-embedded sections)

Immunohistochemical staining (Formalin-fixed paraffin-embedded sections) of human kidney (A) and human skin (B) with GEM polyclonal antibody (Cat # PAB30100) at 4-8 ug/mL working concentration.

## Specification

<b>Product Description</b>	Rabbit polyclonal antibody raised against synthetic peptide of human GEM.
<b>Immunogen</b>	A synthetic peptide corresponding to C-terminus of human GEM.
<b>Sequence</b>	ETSAAVQHNVKELFEGIVRQVRLRRDSKEKNERRLAYQKRKESMPRKARRFW
<b>Host</b>	Rabbit
<b>Theoretical MW (kDa)</b>	33
<b>Reactivity</b>	Human
<b>Form</b>	Liquid
<b>Purification</b>	Protein A purification
<b>Recommend Usage</b>	Immunohistochemistry (Formalin/PFA-fixed paraffin-embedded sections) (4-8 ug/mL) Western Blot The optimal working dilution should be determined by the end user.
<b>Storage Buffer</b>	In PBS (2% sucrose, 0.09% sodium azide).
<b>Storage Instruction</b>	Store at 4°C. For long term storage store at -20°C. Aliquot to avoid repeated freezing and thawing.
<b>Note</b>	This product contains sodium azide: a POISONOUS AND HAZARDOUS SUBSTANCE which should be handled by trained staff only.

## Applications

- Western Blot (Tissue lysate)

Western Blot analysis of human stomach tumor tissue lysate with GEM polyclonal antibody (Cat # PAB30100) at 1 ug/mL working concentration.

- Western Blot (Cell lysate)

Western Blot analysis of HepG2 cell lysate with GEM polyclonal antibody (Cat # PAB30100) at 2.5 ug/mL working concentration.

- Immunohistochemistry (Formalin/PFA-fixed paraffin-embedded sections)

Immunohistochemical staining (Formalin-fixed paraffin-embedded sections) of human kidney (A) and human skin (B) with GEM polyclonal antibody (Cat # PAB30100) at 4-8 ug/mL working concentration.

## Gene Info — GEM

**Entrez GeneID** [2669](#)**GeneBank Accession#** [NM\\_005261](#)**Protein Accession#** [NP\\_005252:P55040](#)**Gene Name** GEM**Gene Alias** KIR, MGC26294**Gene Description** GTP binding protein overexpressed in skeletal muscle**Omim ID** [600164](#)**Gene Ontology** [Hyperlink](#)

**Gene Summary** The protein encoded by this gene belongs to the RAD/GEM family of GTP-binding proteins. It is associated with the inner face of the plasma membrane and could play a role as a regulatory protein in receptor-mediated signal transduction. Alternative splicing occurs at this locus and two transcript variants encoding the same protein have been identified. [provided by RefSeq]

**Other Designations** GTP-binding mitogen-induced T-cell protein|GTP-binding protein overexpressed in skeletal muscle|kinase-inducible Ras-like protein