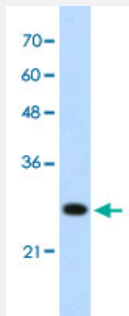


# FOXR2 polyclonal antibody

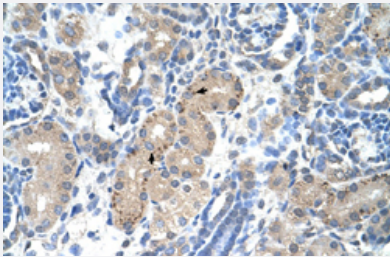
Catalog # PAB30089      Size 100 uL

## Applications



### Western Blot (Cell lysate)

Western Blot analysis of Jurkat cell lysate with FOXR2 polyclonal antibody (Cat # PAB30089) at 1.25 ug/mL working concentration.



### Immunohistochemistry (Formalin/PFA-fixed paraffin-embedded sections)

Immunohistochemical staining (Formalin-fixed paraffin-embedded sections) of human kidney with FOXR2 polyclonal antibody (Cat # PAB30089) at 4-8 ug/mL working concentration.

## Specification

|                             |   |
|-----------------------------|---|
| <b>Product Description</b>  | Rabbit polyclonal antibody raised against synthetic peptide of human FOXR2. |
| <b>Immunogen</b>            | A synthetic peptide corresponding to N-terminus of human FOXR2.             |
| <b>Sequence</b>             | VDPNLCPLGSQEAPKPSGKEDLTNISFPQPQKDEGSNCSEDKVVESL                             |
| <b>Host</b>                 | Rabbit  |
| <b>Theoretical MW (kDa)</b> | 34  |
| <b>Reactivity</b>           | Human   |
| <b>Form</b>                 | Liquid  |

|                            |   |
|----------------------------|---|
| <b>Purification</b>        | Protein A purification  |
| <b>Recommend Usage</b>     | Immunohistochemistry (Formalin/PFA-fixed paraffin-embedded sections) (4-8 ug/mL)<br>Western Blot (1.25 ug/mL)<br>The optimal working dilution should be determined by the end user. |
| <b>Storage Buffer</b>      | In PBS (2% sucrose, 0.09% sodium azide).  |
| <b>Storage Instruction</b> | Store at 4°C. For long term storage store at -20°C.<br>Aliquot to avoid repeated freezing and thawing.  |
| <b>Note</b>                | This product contains sodium azide: a POISONOUS AND HAZARDOUS SUBSTANCE which should be handled by trained staff only.  |

## Applications

- Western Blot (Cell lysate)

Western Blot analysis of Jurkat cell lysate with FOXR2 polyclonal antibody (Cat # PAB30089) at 1.25 ug/mL working concentration.

- Immunohistochemistry (Formalin/PFA-fixed paraffin-embedded sections)

Immunohistochemical staining (Formalin-fixed paraffin-embedded sections) of human kidney with FOXR2 polyclonal antibody (Cat # PAB30089) at 4-8 ug/mL working concentration.

## Gene Info — FOXR2

|                            |                                  |
|----------------------------|----------------------------------|
| <b>Entrez GeneID</b>       | <a href="#">139628</a>           |
| <b>GeneBank Accession#</b> | <a href="#">NM_198451</a>        |
| <b>Protein Accession#</b>  | <a href="#">NP_940853;Q6PJK5</a> |
| <b>Gene Name</b>           | FOXR2                            |
| <b>Gene Alias</b>          | FOXN6, MGC21658                  |
| <b>Gene Description</b>    | forkhead box R2                  |
| <b>Gene Ontology</b>       | <a href="#">Hyperlink</a>        |
| <b>Other Designations</b>  | -                                |