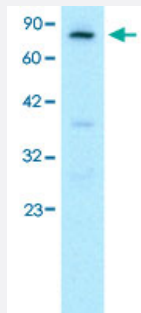


FOXE3 polyclonal antibody

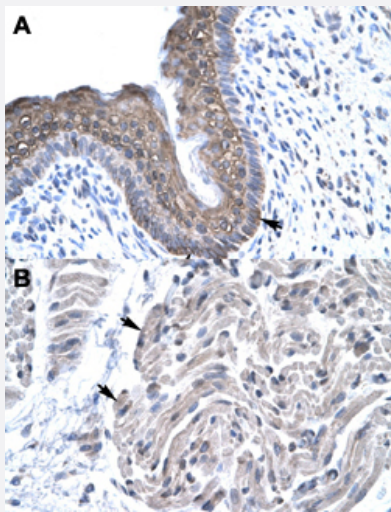
Catalog # PAB30082 Size 100 uL

Applications



Western Blot (Cell lysate)

Western Blot analysis of HepG2 cell lysate with FOXE3 polyclonal antibody (Cat # PAB30082) at 0.2-1 ug/mL working concentration.



Immunohistochemistry (Formalin/PFA-fixed paraffin-embedded sections)

Immunohistochemical staining (Formalin-fixed paraffin-embedded sections) of human spermatophore (A) and human muscle (B) with FOXE3 polyclonal antibody (Cat # PAB30082) at 4-8 ug/mL working concentration.

Specification

Product Description	Rabbit polyclonal antibody raised against synthetic peptide of human FOXE3.
Immunogen	A synthetic peptide corresponding to C-terminus of human FOXE3.
Sequence	PEPPCCAAPDAAAAFPPCAAAASPPLYSQVPDRLVLPATRPGGPLPAE
Host	Rabbit

Theoretical MW (kDa)	33
Reactivity	Human
Form	Liquid
Purification	Affinity purification
Recommend Usage	Immunohistochemistry (Formalin/PFA-fixed paraffin-embedded sections) (4-8 ug/mL) Western Blot (0.2-1 ug/mL) The optimal working dilution should be determined by the end user.
Storage Buffer	In PBS (2% sucrose, 0.09% sodium azide).
Storage Instruction	Store at 4°C. For long term storage store at -20°C. Aliquot to avoid repeated freezing and thawing.
Note	This product contains sodium azide: a POISONOUS AND HAZARDOUS SUBSTANCE which should be handled by trained staff only.

Applications

- Western Blot (Cell lysate)

Western Blot analysis of HepG2 cell lysate with FOXE3 polyclonal antibody (Cat # PAB30082) at 0.2-1 ug/mL working concentration.

- Immunohistochemistry (Formalin/PFA-fixed paraffin-embedded sections)

Immunohistochemical staining (Formalin-fixed paraffin-embedded sections) of human spermatophore (A) and human muscle (B) with FOXE3 polyclonal antibody (Cat # PAB30082) at 4-8 ug/mL working concentration.

Gene Info — FOXE3

Entrez GeneID	2301
GeneBank Accession#	NM_012186
Protein Accession#	NP_036318;Q13461
Gene Name	FOXE3
Gene Alias	ASMD, FKHL12, FREAC8
Gene Description	forkhead box E3
Omim ID	107250 601094 610256

Gene Ontology[Hyperlink](#)**Gene Summary**

drosophila

Other Designations

Forkhead, drosophila, homolog-like 12|forkhead-like 12

Disease

- [Aphakia](#)
- [Microphthalmos](#)