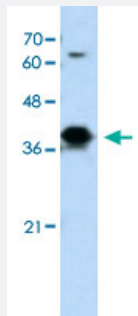


# FOSL1 polyclonal antibody

Catalog # PAB30080

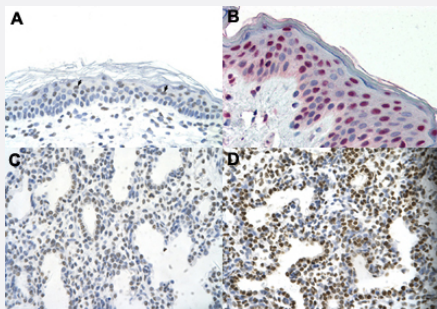
Size 100 uL

## Applications



### Western Blot (Cell lysate)

Western Blot analysis of Jurkat cell lysate with FOSL1 polyclonal antibody (Cat # PAB30080) at 0.2-1 ug/mL working concentration.



### Immunohistochemistry (Formalin/PFA-fixed paraffin-embedded sections)

Immunohistochemical staining (Formalin-fixed paraffin-embedded sections) of human skin (A, B) and human lung (C, D) with FOSL1 polyclonal antibody (Cat # PAB30080) at 4-8 ug/mL working concentration.

## Specification

Product Description	Rabbit polyclonal antibody raised against synthetic peptide of human FOSL1.
Immunogen	A synthetic peptide corresponding to internal region of human FOSL1.
Sequence	TDFLQAETDKLEDEKSGLQREIEELQKQKERLELVLEAHRPICKIPEGAK
Host	Rabbit
Theoretical MW (kDa)	29
Reactivity	Human
Form	Liquid

<b>Purification</b>	Affinity purification
<b>Recommend Usage</b>	Immunohistochemistry (Formalin/PFA-fixed paraffin-embedded sections) (4-8 ug/mL) Western Blot (0.2-1 ug/mL) The optimal working dilution should be determined by the end user.
<b>Storage Buffer</b>	In PBS (2% sucrose, 0.09% sodium azide).
<b>Storage Instruction</b>	Store at 4°C. For long term storage store at -20°C. Aliquot to avoid repeated freezing and thawing.
<b>Note</b>	This product contains sodium azide: a POISONOUS AND HAZARDOUS SUBSTANCE which should be handled by trained staff only.

## Applications

- Western Blot (Cell lysate)

Western Blot analysis of Jurkat cell lysate with FOSL1 polyclonal antibody (Cat # PAB30080) at 0.2-1 ug/mL working concentration.

- Immunohistochemistry (Formalin/PFA-fixed paraffin-embedded sections)

Immunohistochemical staining (Formalin-fixed paraffin-embedded sections) of human skin (A, B) and human lung (C, D) with FOSL1 polyclonal antibody (Cat # PAB30080) at 4-8 ug/mL working concentration.

## Gene Info — FOSL1

<b>Entrez GeneID</b>	<a href="#">8061</a>
<b>GeneBank Accession#</b>	<a href="#">NM_005438</a>
<b>Protein Accession#</b>	<a href="#">NP_005429:P15407</a>
<b>Gene Name</b>	FOSL1
<b>Gene Alias</b>	FRA, FRA1, fra-1
<b>Gene Description</b>	FOS-like antigen 1
<b>Omim ID</b>	<a href="#">136515</a>
<b>Gene Ontology</b>	<a href="#">Hyperlink</a>

**Gene Summary**

The Fos gene family consists of 4 members: FOS, FOSB, FOSL1, and FOSL2. These genes encode leucine zipper proteins that can dimerize with proteins of the JUN family, thereby forming the transcription factor complex AP-1. As such, the FOS proteins have been implicated as regulators of cell proliferation, differentiation, and transformation. [provided by RefSeq]

**Other Designations**

FOS-like antigen-1|Fos-related antigen

**Pathway**

- [Wnt signaling pathway](#)

**Disease**

- [Cardiovascular Diseases](#)
- [Diabetes Mellitus](#)
- [Disease Models](#)
- [Edema](#)
- [Genetic Predisposition to Disease](#)