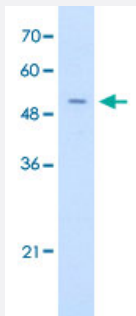


FECH polyclonal antibody

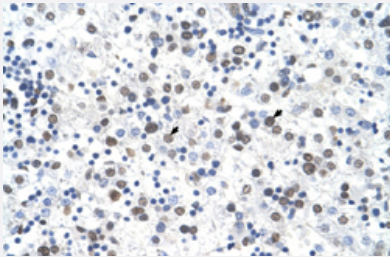
Catalog # PAB30074 Size 100 uL

Applications



Western Blot (Cell lysate)

Western Blot analysis of Jurkat cell lysate with FECH polyclonal antibody (Cat # PAB30074) at 0.2-1 ug/mL working concentration.



Immunohistochemistry (Formalin/PFA-fixed paraffin-embedded sections)

Immunohistochemical staining (Formalin-fixed paraffin-embedded sections) of human liver with FECH polyclonal antibody (Cat # PAB30074) at 4-8 ug/mL working concentration.

Specification

Product Description	Rabbit polyclonal antibody raised against synthetic peptide of human FECH.
Immunogen	A synthetic peptide corresponding to N-terminus of human FECH.
Sequence	QHAQGAKPQVQPQKRYESNIRKPKTGILMLNMGGPETLGDVHDFLLRLFL
Host	Rabbit
Theoretical MW (kDa)	47
Reactivity	Human
Form	Liquid

Purification	Affinity purification
Recommend Usage	Immunohistochemistry (Formalin/PFA-fixed paraffin-embedded sections) (4-8 ug/mL) Western Blot (0.2-1 ug/mL) The optimal working dilution should be determined by the end user.
Storage Buffer	In PBS (2% sucrose, 0.09% sodium azide).
Storage Instruction	Store at 4°C. For long term storage store at -20°C. Aliquot to avoid repeated freezing and thawing.
Note	This product contains sodium azide: a POISONOUS AND HAZARDOUS SUBSTANCE which should be handled by trained staff only.

Applications

- Western Blot (Cell lysate)

Western Blot analysis of Jurkat cell lysate with FECH polyclonal antibody (Cat # PAB30074) at 0.2-1 ug/mL working concentration.

- Immunohistochemistry (Formalin/PFA-fixed paraffin-embedded sections)

Immunohistochemical staining (Formalin-fixed paraffin-embedded sections) of human liver with FECH polyclonal antibody (Cat # PAB30074) at 4-8 ug/mL working concentration.

Gene Info — FECH

Entrez GeneID	2235
GeneBank Accession#	NM_001012515
Protein Accession#	NP_001012533:P22830
Gene Name	FECH
Gene Alias	EPP, FCE
Gene Description	ferrochelatase (protoporphyrin)
Omim ID	177000
Gene Ontology	Hyperlink

Gene Summary

The protein encoded by this gene is localized to the mitochondrion, where it catalyzes the insertion of the ferrous form of iron into protoporphyrin IX in the heme synthesis pathway. Mutations in this gene are associated with erythropoietic protoporphyria. Two transcript variants encoding different isoforms have been found for this gene. [provided by RefSeq]

Other Designations

ferrochelatase|heme synthetase|protoheme ferro-lyase

Pathway

- [Metabolic pathways](#)
- [Porphyrin and chlorophyll metabolism](#)

Disease

- [Genetic Predisposition to Disease](#)
- [Porphyria](#)
- [Protoporphyria](#)
- [Tobacco Use Disorder](#)