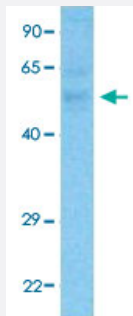


FBXL7 polyclonal antibody

Catalog # PAB30072

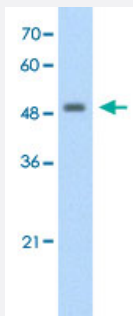
Size 100 uL

Applications



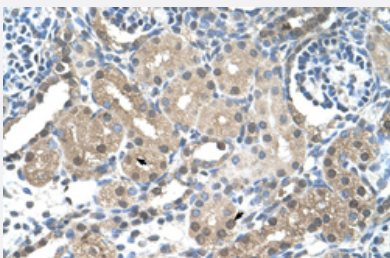
Western Blot (Tissue lysate)

Western Blot analysis of human fetal liver tissue lysate with FBXL7 polyclonal antibody (Cat # PAB30072) at 1 ug/mL working concentration.



Western Blot (Cell lysate)

Western Blot analysis of HepG2 cell lysate with FBXL7 polyclonal antibody (Cat # PAB30072) at 1.25 ug/mL working concentration.



Immunohistochemistry (Formalin/PFA-fixed paraffin-embedded sections)

Immunohistochemical staining (Formalin-fixed paraffin-embedded sections) of human kidney with FBXL7 polyclonal antibody (Cat # PAB30072) at 4-8 ug/mL working concentration.

Specification

Product Description

Rabbit polyclonal antibody raised against synthetic peptide of human FBXL7.

Immunogen

A synthetic peptide corresponding to N-terminus of human FBXL7.

Sequence	IRLASRPQKEQASIDRLPDHSMVQIFSFLPTNQLCRCARVCRRWYNLAWD
Host	Rabbit
Theoretical MW (kDa)	54
Reactivity	Human
Form	Liquid
Purification	Protein A purification
Recommend Usage	Immunohistochemistry (Formalin/PFA-fixed paraffin-embedded sections) (4-8 ug/mL) Western Blot The optimal working dilution should be determined by the end user.
Storage Buffer	In PBS (2% sucrose, 0.09% sodium azide).
Storage Instruction	Store at 4°C. For long term storage store at -20°C. Aliquot to avoid repeated freezing and thawing.
Note	This product contains sodium azide: a POISONOUS AND HAZARDOUS SUBSTANCE which should be handled by trained staff only.

Applications

- Western Blot (Tissue lysate)

Western Blot analysis of human fetal liver tissue lysate with FBXL7 polyclonal antibody (Cat # PAB30072) at 1 ug/mL working concentration.

- Western Blot (Cell lysate)

Western Blot analysis of HepG2 cell lysate with FBXL7 polyclonal antibody (Cat # PAB30072) at 1.25 ug/mL working concentration.

- Immunohistochemistry (Formalin/PFA-fixed paraffin-embedded sections)

Immunohistochemical staining (Formalin-fixed paraffin-embedded sections) of human kidney with FBXL7 polyclonal antibody (Cat # PAB30072) at 4-8 ug/mL working concentration.

Gene Info — FBXL7

Entrez GeneID	23194
GeneBank Accession#	NM_012304
Protein Accession#	NP_036436;Q9UJT9

Gene Name	FBXL7
Gene Alias	FBL6, FBL7
Gene Description	F-box and leucine-rich repeat protein 7
Omim ID	605656
Gene Ontology	Hyperlink
Gene Summary	<p>This gene encodes a member of the F-box protein family which is characterized by an approximately 40 amino acid motif, the F-box. The F-box proteins constitute one of the four subunits of ubiquitin protein ligase complex called SCFs (SKP1-cullin-F-box), which function in phosphorylation-dependent ubiquitination. The F-box proteins are divided into 3 classes: Fbws containing WD-40 domains, Fbls containing leucine-rich repeats, and Fbxs containing either different protein-protein interaction modules or no recognizable motifs. The protein encoded by this gene belongs to the Fbls class and, in addition to an F-box, contains several tandem leucine-rich repeats. [provided by RefSeq]</p>
Other Designations	F-box protein Fbl7

Disease

- [Breast Neoplasms](#)
- [Carcinoma](#)
- [Genetic Predisposition to Disease](#)
- [Tobacco Use Disorder](#)