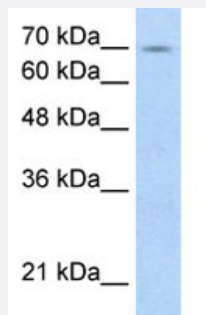


FBXL5 polyclonal antibody

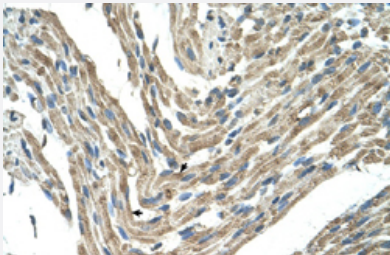
Catalog # PAB30071 Size 100 uL

Applications



Western Blot (Cell lysate)

Western Blot analysis of HepG2 cell lysate with FBXL5 polyclonal antibody (Cat # PAB30071) at 5 ug/mL working concentration.



Immunohistochemistry (Formalin/PFA-fixed paraffin-embedded sections)

Immunohistochemical staining (Formalin-fixed paraffin-embedded sections) of human muscle with FBXL5 polyclonal antibody (Cat # PAB30071) at 4-8 ug/mL working concentration.

Specification

Product Description	Rabbit polyclonal antibody raised against synthetic peptide of human FBXL5.
Immunogen	A synthetic peptide corresponding to internal region of human FBXL5.
Sequence	VHWARGDWYSGPATELDTEPDDEWVKNRKDESRAFHEWDEDADIDEESES
Host	Rabbit
Theoretical MW (kDa)	76
Reactivity	Human
Form	Liquid

Purification	Protein A purification
Recommend Usage	Immunohistochemistry (Formalin/PFA-fixed paraffin-embedded sections) (4-8 ug/mL) Western Blot (5 ug/mL) The optimal working dilution should be determined by the end user.
Storage Buffer	In PBS (2% sucrose, 0.09% sodium azide).
Storage Instruction	Store at 4°C. For long term storage store at -20°C. Aliquot to avoid repeated freezing and thawing.
Note	This product contains sodium azide: a POISONOUS AND HAZARDOUS SUBSTANCE which should be handled by trained staff only.

Applications

- Western Blot (Cell lysate)

Western Blot analysis of HepG2 cell lysate with FBXL5 polyclonal antibody (Cat # PAB30071) at 5 ug/mL working concentration.

- Immunohistochemistry (Formalin/PFA-fixed paraffin-embedded sections)

Immunohistochemical staining (Formalin-fixed paraffin-embedded sections) of human muscle with FBXL5 polyclonal antibody (Cat # PAB30071) at 4-8 ug/mL working concentration.

Gene Info — FBXL5

Entrez GeneID	26234
GeneBank Accession#	NM_012161
Protein Accession#	NP_036293:Q9UKA1
Gene Name	FBXL5
Gene Alias	FBL4, FBL5, FLR1
Gene Description	F-box and leucine-rich repeat protein 5
Omim ID	605655
Gene Ontology	Hyperlink

Gene Summary

This gene encodes a member of the F-box protein family which is characterized by an approximately 40 amino acid motif, the F-box. The F-box proteins constitute one of the four subunits of ubiquitin protein ligase complex called SCFs (SKP1-cullin-F-box), which function in phosphorylation-dependent ubiquitination. The F-box proteins are divided into 3 classes: Fbws containing WD-40 domains, Fbls containing leucine-rich repeats, and Fbxs containing either different protein-protein interaction modules or no recognizable motifs. The protein encoded by this gene belongs to the Fbls class and, in addition to an F-box, contains several tandem leucine-rich repeats. Alternative splicing of this gene generates 2 transcript variants. [provided by RefSeq]

Other Designations

F-box protein FBL5