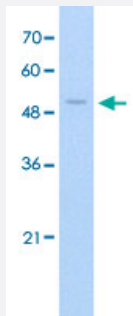


FAM174B polyclonal antibody

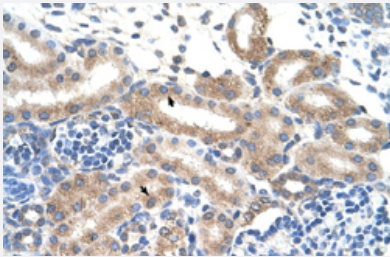
Catalog # PAB30066 Size 100 uL

Applications



Western Blot (Cell lysate)

Western Blot analysis of Jurkat cell lysate with FAM174B polyclonal antibody (Cat # PAB30066) at 2.5 ug/mL working concentration.



Immunohistochemistry (Formalin/PFA-fixed paraffin-embedded sections)

Immunohistochemical staining (Formalin-fixed paraffin-embedded sections) of human kidney with FAM174B polyclonal antibody (Cat # PAB30066) at 4-8 ug/mL working concentration.

Specification

Product Description	Rabbit polyclonal antibody raised against synthetic peptide of human FAM174B.
Immunogen	A synthetic peptide corresponding to N-terminus of human FAM174B.
Sequence	MRVPLPAPLLPLLLLALLAAPAARASRAESVSAPWPEPERESRPPPGPG
Host	Rabbit
Theoretical MW (kDa)	17
Reactivity	Human
Form	Liquid

Purification	Protein A purification
Recommend Usage	Immunohistochemistry (Formalin/PFA-fixed paraffin-embedded sections) (4-8 ug/mL) Western Blot (2.5 ug/mL) The optimal working dilution should be determined by the end user.
Storage Buffer	In PBS (2% sucrose, 0.09% sodium azide).
Storage Instruction	Store at 4°C. For long term storage store at -20°C. Aliquot to avoid repeated freezing and thawing.
Note	This product contains sodium azide: a POISONOUS AND HAZARDOUS SUBSTANCE which should be handled by trained staff only.

Applications

- Western Blot (Cell lysate)

Western Blot analysis of Jurkat cell lysate with FAM174B polyclonal antibody (Cat # PAB30066) at 2.5 ug/mL working concentration.

- Immunohistochemistry (Formalin/PFA-fixed paraffin-embedded sections)

Immunohistochemical staining (Formalin-fixed paraffin-embedded sections) of human kidney with FAM174B polyclonal antibody (Cat # PAB30066) at 4-8 ug/mL working concentration.

Gene Info — FAM174B

Entrez GeneID	400451
GeneBank Accession#	NM_207446
Protein Accession#	NP_997329;Q3ZCQ3
Gene Name	FAM174B
Gene Alias	MGC102891
Gene Description	family with sequence similarity 174, member B
Gene Ontology	Hyperlink
Gene Summary	O
Other Designations	hypothetical protein LOC400451