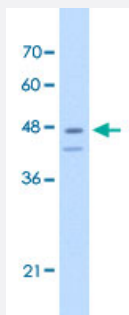


# FAH polyclonal antibody

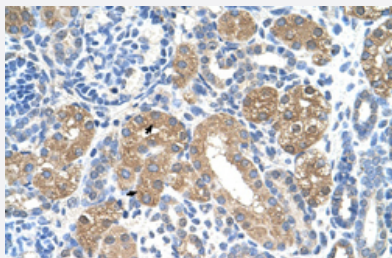
Catalog # PAB30064      Size 100 uL

## Applications



### Western Blot (Cell lysate)

Western Blot analysis of Jurkat cell lysate with FAH polyclonal antibody (Cat # PAB30064) at 2.5 ug/mL working concentration.



### Immunohistochemistry (Formalin/PFA-fixed paraffin-embedded sections)

Immunohistochemical staining (Formalin-fixed paraffin-embedded sections) of human kidney with FAH polyclonal antibody (Cat # PAB30064) at 4-8 ug/mL working concentration.

## Specification

Product Description	Rabbit polyclonal antibody raised against synthetic peptide of human FAH.
Immunogen	A synthetic peptide corresponding to C-terminus of human FAH.
Sequence	AATICKSNFKYMYWTMLQQLTHHSVNGCNLRPGDLLASGTISGPEPENFG
Host	Rabbit
Theoretical MW (kDa)	46
Reactivity	Human
Form	Liquid

<b>Purification</b>	Protein A purification
<b>Recommend Usage</b>	Immunohistochemistry (Formalin/PFA-fixed paraffin-embedded sections) (4-8 ug/mL) Western Blot (2.5 ug/mL) The optimal working dilution should be determined by the end user.
<b>Storage Buffer</b>	In PBS (2% sucrose, 0.09% sodium azide).
<b>Storage Instruction</b>	Store at 4°C. For long term storage store at -20°C. Aliquot to avoid repeated freezing and thawing.
<b>Note</b>	This product contains sodium azide: a POISONOUS AND HAZARDOUS SUBSTANCE which should be handled by trained staff only.

## Applications

- Western Blot (Cell lysate)

Western Blot analysis of Jurkat cell lysate with FAH polyclonal antibody (Cat # PAB30064) at 2.5 ug/mL working concentration.

- Immunohistochemistry (Formalin/PFA-fixed paraffin-embedded sections)

Immunohistochemical staining (Formalin-fixed paraffin-embedded sections) of human kidney with FAH polyclonal antibody (Cat # PAB30064) at 4-8 ug/mL working concentration.

## Gene Info — FAH

<b>Entrez GeneID</b>	<a href="#">2184</a>
<b>GeneBank Accession#</b>	<a href="#">NM_000137</a>
<b>Protein Accession#</b>	<a href="#">NP_000128;P16930</a>
<b>Gene Name</b>	FAH
<b>Gene Alias</b>	-
<b>Gene Description</b>	fumarylacetoacetate hydrolase (fumarylacetoacetase)
<b>Omim ID</b>	<a href="#">276700</a>
<b>Gene Ontology</b>	<a href="#">Hyperlink</a>
<b>Gene Summary</b>	This gene encodes the last enzyme in the tyrosine catabolism pathway. FAH deficiency is associated with Type 1 hereditary tyrosinemia (HT). [provided by RefSeq]
<b>Other Designations</b>	fumarylacetoacetase

## Pathway

- [Metabolic pathways](#)
- [Styrene degradation](#)
- [Tyrosine metabolism](#)

## Disease

- [Genetic Predisposition to Disease](#)
- [Schizophrenia](#)