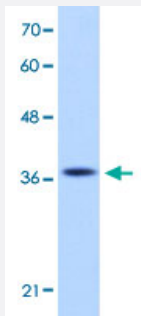


EXOSC7 polyclonal antibody

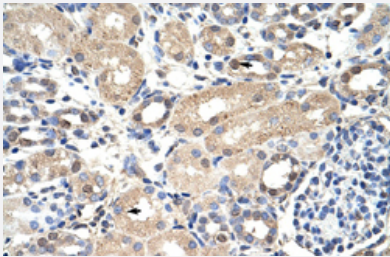
Catalog # PAB30061 Size 100 uL

Applications



Western Blot (Cell lysate)

Western Blot analysis of Jurkat cell lysate with EXOSC7 polyclonal antibody (Cat # PAB30061) at 1.25 ug/mL working concentration.



Immunohistochemistry (Formalin/PFA-fixed paraffin-embedded sections)

Immunohistochemical staining (Formalin-fixed paraffin-embedded sections) of human kidney with EXOSC7 polyclonal antibody (Cat # PAB30061) at 4-8 ug/mL working concentration.

Specification

Product Description	Rabbit polyclonal antibody raised against synthetic peptide of human EXOSC7.
Immunogen	A synthetic peptide corresponding to N-terminus of human EXOSC7.
Sequence	LEKPNEGYLEFFVDCSASATPEFEGRGDDLGTETANTLYRIFNNKSSVD
Host	Rabbit
Theoretical MW (kDa)	32
Reactivity	Human
Form	Liquid

Purification	Protein A purification
Recommend Usage	Immunohistochemistry (Formalin/PFA-fixed paraffin-embedded sections) (4-8 ug/mL) Western Blot (1.25 ug/mL) The optimal working dilution should be determined by the end user.
Storage Buffer	In PBS (2% sucrose, 0.09% sodium azide).
Storage Instruction	Store at 4°C. For long term storage store at -20°C. Aliquot to avoid repeated freezing and thawing.
Note	This product contains sodium azide: a POISONOUS AND HAZARDOUS SUBSTANCE which should be handled by trained staff only.

Applications

- Western Blot (Cell lysate)

Western Blot analysis of Jurkat cell lysate with EXOSC7 polyclonal antibody (Cat # PAB30061) at 1.25 ug/mL working concentration.

- Immunohistochemistry (Formalin/PFA-fixed paraffin-embedded sections)

Immunohistochemical staining (Formalin-fixed paraffin-embedded sections) of human kidney with EXOSC7 polyclonal antibody (Cat # PAB30061) at 4-8 ug/mL working concentration.

Gene Info — EXOSC7

Entrez GeneID	23016
GeneBank Accession#	NM_015004
Protein Accession#	NP_055819;Q15024
Gene Name	EXOSC7
Gene Alias	EAP1, FLJ26543, KIAA0116, RRP42, Rrp42p, hRrp42p, p8
Gene Description	exosome component 7
Omim ID	606488
Gene Ontology	Hyperlink
Other Designations	-

Pathway

- [RNA degradation](#)