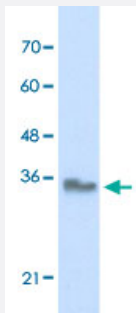


EXOSC3 polyclonal antibody

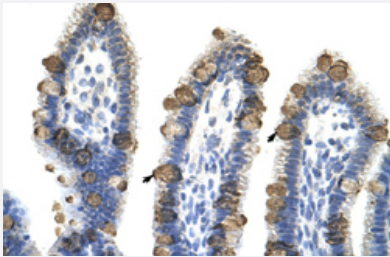
Catalog # PAB30057 Size 100 uL

Applications



Western Blot (Cell lysate)

Western Blot analysis of Jurkat cell lysate with EXOSC3 polyclonal antibody (Cat # PAB30057) at 0.2-1 ug/mL working concentration.



Immunohistochemistry (Formalin/PFA-fixed paraffin-embedded sections)

Immunohistochemical staining (Formalin-fixed paraffin-embedded sections) of human intestine with EXOSC3 polyclonal antibody (Cat # PAB30057) at 4-8 ug/mL working concentration.

Specification

Product Description	Rabbit polyclonal antibody raised against synthetic peptide of human EXOSC3.
Immunogen	A synthetic peptide corresponding to internal region of human EXOSC3.
Sequence	TKCGRLRHKEPGSGSGGGVYWVDSQQKRYVPVKGDHVIGMTAKSGDIFK
Host	Rabbit
Theoretical MW (kDa)	30
Reactivity	Human
Form	Liquid

Purification	Affinity purification
Recommend Usage	Immunohistochemistry (Formalin/PFA-fixed paraffin-embedded sections) (4-8 ug/mL) Western Blot (0.2-1 ug/mL) The optimal working dilution should be determined by the end user.
Storage Buffer	In PBS (2% sucrose, 0.09% sodium azide).
Storage Instruction	Store at 4°C. For long term storage store at -20°C. Aliquot to avoid repeated freezing and thawing.
Note	This product contains sodium azide: a POISONOUS AND HAZARDOUS SUBSTANCE which should be handled by trained staff only.

Applications

- Western Blot (Cell lysate)

Western Blot analysis of Jurkat cell lysate with EXOSC3 polyclonal antibody (Cat # PAB30057) at 0.2-1 ug/mL working concentration.

- Immunohistochemistry (Formalin/PFA-fixed paraffin-embedded sections)

Immunohistochemical staining (Formalin-fixed paraffin-embedded sections) of human intestine with EXOSC3 polyclonal antibody (Cat # PAB30057) at 4-8 ug/mL working concentration.

Gene Info — EXOSC3

Entrez GeneID	51010
GeneBank Accession#	NM_016042
Protein Accession#	NP_057126.Q9NQY5
Gene Name	EXOSC3
Gene Alias	CGI-102, MGC15120, MGC723, RP11-3J10.8, RRP40, Rrp40p, bA3J10.7, hRrp40p, p10
Gene Description	exosome component 3
Omim ID	606489
Gene Ontology	Hyperlink
Other Designations	OTTHUMP00000021392 exosome component Rrp40

Pathway

- [RNA degradation](#)

Disease

- [Disease Progression](#)
- [Disease Susceptibility](#)
- [HIV Infections](#)