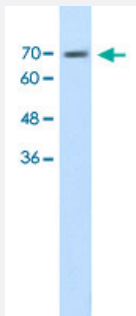


EPS8L1 polyclonal antibody

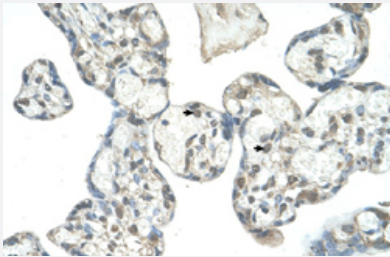
Catalog # PAB30052 Size 100 uL

Applications



Western Blot (Cell lysate)

Western Blot analysis of HepG2 cell lysate with EPS8L1 polyclonal antibody (Cat # PAB30052) at 1.25 ug/mL working concentration.



Immunohistochemistry (Formalin/PFA-fixed paraffin-embedded sections)

Immunohistochemical staining (Formalin-fixed paraffin-embedded sections) of human placenta with EPS8L1 polyclonal antibody (Cat # PAB30052) at 4-8 ug/mL working concentration.

Specification

Product Description	Rabbit polyclonal antibody raised against synthetic peptide of human EPS8L1.
Immunogen	A synthetic peptide corresponding to N-terminus of human EPS8L1.
Sequence	QRDRSPAAETPPLQRRPSVRAVISTVERGAGRGRPQAKPIPEAEEEAQRPE
Host	Rabbit
Theoretical MW (kDa)	66
Reactivity	Human
Form	Liquid

Purification	Protein A purification
Recommend Usage	Immunohistochemistry (Formalin/PFA-fixed paraffin-embedded sections) (4-8 ug/mL) Western Blot (1.25 ug/mL) The optimal working dilution should be determined by the end user.
Storage Buffer	In PBS (2% sucrose, 0.09% sodium azide).
Storage Instruction	Store at 4°C. For long term storage store at -20°C. Aliquot to avoid repeated freezing and thawing.
Note	This product contains sodium azide: a POISONOUS AND HAZARDOUS SUBSTANCE which should be handled by trained staff only.

Applications

- Western Blot (Cell lysate)

Western Blot analysis of HepG2 cell lysate with EPS8L1 polyclonal antibody (Cat # PAB30052) at 1.25 ug/mL working concentration.

- Immunohistochemistry (Formalin/PFA-fixed paraffin-embedded sections)

Immunohistochemical staining (Formalin-fixed paraffin-embedded sections) of human placenta with EPS8L1 polyclonal antibody (Cat # PAB30052) at 4-8 ug/mL working concentration.

Gene Info — EPS8L1

Entrez GeneID	54869
GeneBank Accession#	NM_017729
Protein Accession#	NP_060199;Q8TE68-2
Gene Name	EPS8L1
Gene Alias	DRC3, EPS8R1, FLJ20258, MGC23164, MGC4642, PP10566
Gene Description	EPS8-like 1
Gene Ontology	Hyperlink
Gene Summary	This gene encodes a protein that is related to epidermal growth factor receptor pathway substrate 8 (EPS8), a substrate for the epidermal growth factor receptor. The function of this protein is unknown. At least two alternatively spliced transcript variants encoding different isoforms have been found for this gene. [provided by RefSeq]

Other Designations

EPS8-related protein 1|epidermal growth factor receptor pathway substrate 8-like protein 1|epidermal growth factor receptor pathway substrate 8-related protein 1
