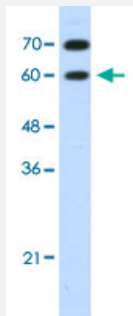


DMRT2 polyclonal antibody

Catalog # PAB30038

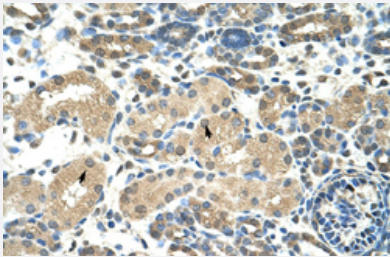
Size 100 uL

Applications



Western Blot (Cell lysate)

Western Blot analysis of HepG2 cell lysate with DMRT2 polyclonal antibody (Cat # PAB30038) at 1.25 ug/mL working concentration.



Immunohistochemistry (Formalin/PFA-fixed paraffin-embedded sections)

Immunohistochemical staining (Formalin-fixed paraffin-embedded sections) of human kidney with DMRT2 polyclonal antibody (Cat # PAB30038) at 4-8 ug/mL working concentration.

Specification

Product Description	Rabbit polyclonal antibody raised against synthetic peptide of human DMRT2.
Immunogen	A synthetic peptide corresponding to N-terminus of human DMRT2.
Sequence	DPQAGSAAGDWEIDVESLELEEDVCGAPRSTPPGPSPPPADGDCEDDEDD
Host	Rabbit
Theoretical MW (kDa)	62
Reactivity	Human
Form	Liquid

Purification	Protein A purification
Recommend Usage	Immunohistochemistry (Formalin/PFA-fixed paraffin-embedded sections) (4-8 ug/mL) Western Blot (1.25 ug/mL) The optimal working dilution should be determined by the end user.
Storage Buffer	In PBS (2% sucrose, 0.09% sodium azide).
Storage Instruction	Store at 4°C. For long term storage store at -20°C. Aliquot to avoid repeated freezing and thawing.
Note	This product contains sodium azide: a POISONOUS AND HAZARDOUS SUBSTANCE which should be handled by trained staff only.

Applications

- Western Blot (Cell lysate)

Western Blot analysis of HepG2 cell lysate with DMRT2 polyclonal antibody (Cat # PAB30038) at 1.25 ug/mL working concentration.

- Immunohistochemistry (Formalin/PFA-fixed paraffin-embedded sections)

Immunohistochemical staining (Formalin-fixed paraffin-embedded sections) of human kidney with DMRT2 polyclonal antibody (Cat # PAB30038) at 4-8 ug/mL working concentration.

Gene Info — DMRT2

Entrez GeneID	10655
GeneBank Accession#	NM_181872
Protein Accession#	NP_870987.Q9Y5R5
Gene Name	DMRT2
Gene Alias	-
Gene Description	doublesex and mab-3 related transcription factor 2
Omim ID	604935
Gene Ontology	Hyperlink
Other Designations	OTTHUMP00000020964 OTTHUMP00000020965 OTTHUMP00000020966 OTTHUMP00000020967 terra-like protein