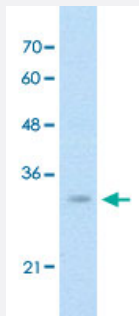


# DCXR polyclonal antibody

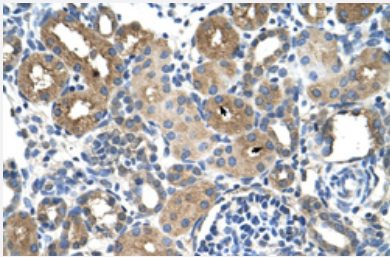
Catalog # PAB30025      Size 100 uL

## Applications



### Western Blot (Cell lysate)

Western Blot analysis of Jurkat cell lysate with DCXR polyclonal antibody (Cat # PAB30025) at 0.2-1 ug/mL working concentration.



### Immunohistochemistry (Formalin/PFA-fixed paraffin-embedded sections)

Immunohistochemical staining (Formalin-fixed paraffin-embedded sections) of human kidney with DCXR polyclonal antibody (Cat # PAB30025) at 4-8 ug/mL working concentration.

## Specification

Product Description	Rabbit polyclonal antibody raised against synthetic peptide of human DCXR.
Immunogen	A synthetic peptide corresponding to internal region of human DCXR.
Sequence	STKGALDMLTKVMALELGPHKIRVNAVNPVMTSMGQATWSDPHKAKTM
Host	Rabbit
Theoretical MW (kDa)	27
Reactivity	Human
Form	Liquid

<b>Purification</b>	Affinity purification
<b>Recommend Usage</b>	Immunohistochemistry (Formalin/PFA-fixed paraffin-embedded sections) (4-8 ug/mL) Western Blot (0.2-1 ug/mL) The optimal working dilution should be determined by the end user.
<b>Storage Buffer</b>	In PBS (2% sucrose, 0.09% sodium azide).
<b>Storage Instruction</b>	Store at 4°C. For long term storage store at -20°C. Aliquot to avoid repeated freezing and thawing.
<b>Note</b>	This product contains sodium azide: a POISONOUS AND HAZARDOUS SUBSTANCE which should be handled by trained staff only.

## Applications

- Western Blot (Cell lysate)

Western Blot analysis of Jurkat cell lysate with DCXR polyclonal antibody (Cat # PAB30025) at 0.2-1 ug/mL working concentration.

- Immunohistochemistry (Formalin/PFA-fixed paraffin-embedded sections)

Immunohistochemical staining (Formalin-fixed paraffin-embedded sections) of human kidney with DCXR polyclonal antibody (Cat # PAB30025) at 4-8 ug/mL working concentration.

## Gene Info — DCXR

<b>Entrez GeneID</b>	<a href="#">51181</a>
<b>GeneBank Accession#</b>	<a href="#">NM_016286</a>
<b>Protein Accession#</b>	<a href="#">NP_057370:Q7Z4W1</a>
<b>Gene Name</b>	DCXR
<b>Gene Alias</b>	DCR, HCR2, HCR11, KIDCR, P34H, SDR20C1
<b>Gene Description</b>	dicarbonyl/L-xylulose reductase
<b>Omim ID</b>	<a href="#">608347</a>
<b>Gene Ontology</b>	<a href="#">Hyperlink</a>
<b>Gene Summary</b>	DCXR is an enzyme that has both diacetyl reductase (EC 1.1.1.5) and L-xylulose reductase (EC 1.1.1.10) activities (Nakagawa et al., 2002 [PubMed 11882650]).[supplied by OMIM]

**Other Designations**

carbonyl reductase III|human carbonyl reductase 2|kidney dicarbonyl reductase|short chain dehydrogenase/reductase family 20C, member 1

## Pathway

- [Metabolic pathways](#)
- [Pentose and glucuronate interconversions](#)