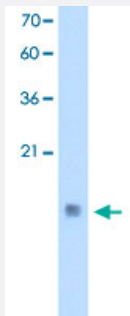


CSTB polyclonal antibody

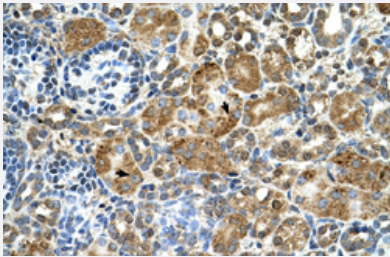
Catalog # PAB30012 Size 100 uL

Applications



Western Blot (Transfected lysate)

Western Blot analysis of transfected 293T cell lysate with CSTB polyclonal antibody (Cat # PAB30012) at 0.25 ug/mL working concentration.



Immunohistochemistry (Formalin/PFA-fixed paraffin-embedded sections)

Immunohistochemical staining (Formalin-fixed paraffin-embedded sections) of human kidney with CSTB polyclonal antibody (Cat # PAB30012) at 4-8 ug/mL working concentration.

Specification

Product Description	Rabbit polyclonal antibody raised against synthetic peptide of human CSTB.
Immunogen	A synthetic peptide corresponding to internal region of human CSTB.
Sequence	AGTNYFIKVHVGDEDFVHLRVFQSLPHENKPLTLSNYQTNKAKHDELTYP
Host	Rabbit
Theoretical MW (kDa)	11
Reactivity	Human
Form	Liquid

Purification	Affinity purification
Recommend Usage	Immunohistochemistry (Formalin/PFA-fixed paraffin-embedded sections) (4-8 ug/mL) Western Blot (0.25 ug/mL) The optimal working dilution should be determined by the end user.
Storage Buffer	In PBS (2% sucrose, 0.09% sodium azide).
Storage Instruction	Store at 4°C. For long term storage store at -20°C. Aliquot to avoid repeated freezing and thawing.
Note	This product contains sodium azide: a POISONOUS AND HAZARDOUS SUBSTANCE which should be handled by trained staff only.

Applications

- Western Blot (Transfected lysate)

Western Blot analysis of transfected 293T cell lysate with CSTB polyclonal antibody (Cat # PAB30012) at 0.25 ug/mL working concentration.

- Immunohistochemistry (Formalin/PFA-fixed paraffin-embedded sections)

Immunohistochemical staining (Formalin-fixed paraffin-embedded sections) of human kidney with CSTB polyclonal antibody (Cat # PAB30012) at 4-8 ug/mL working concentration.

Gene Info — CSTB

Entrez GeneID	1476
GeneBank Accession#	NM_000100
Protein Accession#	NP_000091:P04080
Gene Name	CSTB
Gene Alias	CST6, EPM1, PME, STFB
Gene Description	cystatin B (stefin B)
Omim ID	254800 601145
Gene Ontology	Hyperlink

Gene Summary

The cystatin superfamily encompasses proteins that contain multiple cystatin-like sequences. Some of the members are active cysteine protease inhibitors, while others have lost or perhaps never acquired this inhibitory activity. There are three inhibitory families in the superfamily, including the type 1 cystatins (stefins), type 2 cystatins and kininogens. This gene encodes a stefin that functions as an intracellular thiol protease inhibitor. The protein is able to form a dimer stabilized by noncovalent forces, inhibiting papain and cathepsins L, H and B. The protein is thought to play a role in protecting against the proteases leaking from lysosomes. Evidence indicates that mutations in this gene are responsible for the primary defects in patients with progressive myoclonic epilepsy (EPM1). [provided by RefSeq]

Other Designations

CPI-B|cystatin B|liver thiol proteinase inhibitor|stefin B

Disease

- [Cardiovascular Diseases](#)
- [Diabetes Mellitus](#)
- [Edema](#)
- [Epilepsy](#)