

CREB3L2 polyclonal antibody

Catalog # PAB30010

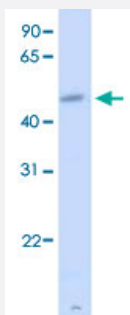
Size 100 uL

Applications



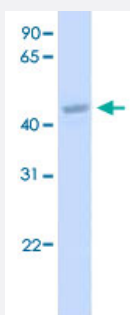
Western Blot (Tissue lysate)

Western Blot analysis of human fetal brain tissue lysate with CREB3L2 polyclonal antibody (Cat # PAB30010) at 1 ug/mL working concentration.



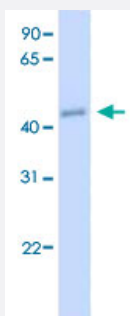
Western Blot (Tissue lysate)

Western Blot analysis of human fetal muscle tissue lysate with CREB3L2 polyclonal antibody (Cat # PAB30010) at 1 ug/mL working concentration.



Western Blot (Tissue lysate)

Western Blot analysis of human fetal lung tissue lysate with CREB3L2 polyclonal antibody (Cat # PAB30010) at 1 ug/mL working concentration.



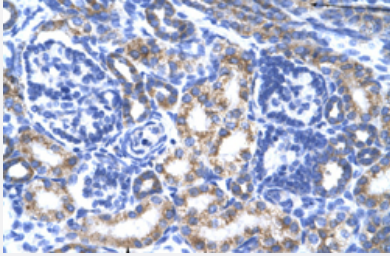
Western Blot (Tissue lysate)

Western Blot analysis of human fetal heart tissue lysate with CREB3L2 polyclonal antibody (Cat # PAB30010) at 1 ug/mL working concentration.



Western Blot (Cell lysate)

Western Blot analysis of Jurkat cell lysate with CREB3L2 polyclonal antibody (Cat # PAB30010) at 1.25 ug/mL working concentration.



Immunohistochemistry (Formalin/PFA-fixed paraffin-embedded sections)

Immunohistochemical staining (Formalin-fixed paraffin-embedded sections) of human kidney with CREB3L2 polyclonal antibody (Cat # PAB30010) at 4-8 ug/mL working concentration.

Specification

Product Description	Rabbit polyclonal antibody raised against synthetic peptide of human CREB3L2.
Immunogen	A synthetic peptide corresponding to N-terminus of human CREB3L2.
Sequence	HSYSLCEEPRASQSPFTHITSDSFNDDEVESEKWYLTDF
Host	Rabbit
Theoretical MW (kDa)	57
Reactivity	Human
Form	Liquid
Purification	Protein A purification
Recommend Usage	Immunohistochemistry (Formalin/PFA-fixed paraffin-embedded sections) (4-8 ug/mL) Western Blot The optimal working dilution should be determined by the end user.
Storage Buffer	In PBS (2% sucrose, 0.09% sodium azide).
Storage Instruction	Store at 4°C. For long term storage store at -20°C. Aliquot to avoid repeated freezing and thawing.

Note

This product contains sodium azide: a POISONOUS AND HAZARDOUS SUBSTANCE which should be handled by trained staff only.

Applications

- Western Blot (Tissue lysate)

Western Blot analysis of human fetal brain tissue lysate with CREB3L2 polyclonal antibody (Cat # PAB30010) at 1 ug/mL working concentration.

- Western Blot (Tissue lysate)

Western Blot analysis of human fetal muscle tissue lysate with CREB3L2 polyclonal antibody (Cat # PAB30010) at 1 ug/mL working concentration.

- Western Blot (Tissue lysate)

Western Blot analysis of human fetal lung tissue lysate with CREB3L2 polyclonal antibody (Cat # PAB30010) at 1 ug/mL working concentration.

- Western Blot (Tissue lysate)

Western Blot analysis of human fetal heart tissue lysate with CREB3L2 polyclonal antibody (Cat # PAB30010) at 1 ug/mL working concentration.

- Western Blot (Cell lysate)

Western Blot analysis of Jurkat cell lysate with CREB3L2 polyclonal antibody (Cat # PAB30010) at 1.25 ug/mL working concentration.

- Immunohistochemistry (Formalin/PFA-fixed paraffin-embedded sections)

Immunohistochemical staining (Formalin-fixed paraffin-embedded sections) of human kidney with CREB3L2 polyclonal antibody (Cat # PAB30010) at 4-8 ug/mL working concentration.

Gene Info — CREB3L2

Entrez GeneID[64764](#)**GeneBank Accession#**[NM_194071](#)**Protein Accession#**[NP_919047:Q70SY1](#)**Gene Name**

CREB3L2

Gene Alias

BBF2H7, MGC131709, MGC71006

Gene Description

cAMP responsive element binding protein 3-like 2

Omim ID	608834
Gene Ontology	Hyperlink
Gene Summary	CREB3L2 is a member of the old astrocyte specifically induced substance (OASIS) DNA binding and basic leucine zipper dimerization (bZIP) family of transcription factors, which includes CREB3 (MIM 606443) and CREB4 (MIM 607138).[supplied by OMIM]
Other Designations	B-ZIB transcription factor FUS/BBF2H7 protein TCAG_1951439 basic transcription factor 2

Pathway

- [Melanogenesis](#)
- [Prostate cancer](#)

Disease

- [Asthma](#)
- [Tobacco Use Disorder](#)