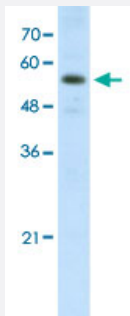


FLJ12529 polyclonal antibody

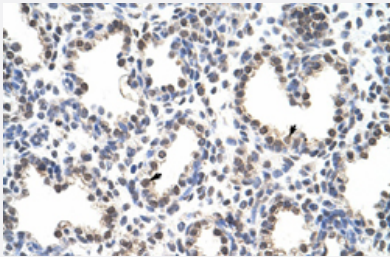
Catalog # PAB30009 Size 100 uL

Applications



Western Blot (Cell lysate)

Western Blot analysis of HepG2 cell lysate with FLJ12529 polyclonal antibody (Cat # PAB30009) at 1.25 ug/mL working concentration.



Immunohistochemistry (Formalin/PFA-fixed paraffin-embedded sections)

Immunohistochemical staining (Formalin-fixed paraffin-embedded sections) of human lung with FLJ12529 polyclonal antibody (Cat # PAB30009) at 4-8 ug/mL working concentration.

Specification

Product Description	Rabbit polyclonal antibody raised against synthetic peptide of human FLJ12529.
Immunogen	A synthetic peptide corresponding to C-terminus of human FLJ12529.
Sequence	GASGSSSRKRHRSRERSPSRSRESSRRHRDLLHNEDRHDDYFQERNREHE
Host	Rabbit
Theoretical MW (kDa)	52
Reactivity	Human
Form	Liquid

Purification	Protein A purification
Recommend Usage	Immunohistochemistry (Formalin/PFA-fixed paraffin-embedded sections) (4-8 ug/mL) Western Blot (1.25 ug/mL) The optimal working dilution should be determined by the end user.
Storage Buffer	In PBS (2% sucrose, 0.09% sodium azide).
Storage Instruction	Store at 4°C. For long term storage store at -20°C. Aliquot to avoid repeated freezing and thawing.
Note	This product contains sodium azide: a POISONOUS AND HAZARDOUS SUBSTANCE which should be handled by trained staff only.

Applications

- Western Blot (Cell lysate)

Western Blot analysis of HepG2 cell lysate with FLJ12529 polyclonal antibody (Cat # PAB30009) at 1.25 ug/mL working concentration.

- Immunohistochemistry (Formalin/PFA-fixed paraffin-embedded sections)

Immunohistochemical staining (Formalin-fixed paraffin-embedded sections) of human lung with FLJ12529 polyclonal antibody (Cat # PAB30009) at 4-8 ug/mL working concentration.

Gene Info — FLJ12529

Entrez GeneID	79869
GeneBank Accession#	NM_024811
Protein Accession#	NP_079087;Q8N684
Gene Name	FLJ12529
Gene Alias	FLJ39024, MGC9315
Gene Description	pre-mRNA cleavage factor I, 59 kDa subunit
Gene Ontology	Hyperlink
Gene Summary	-
Other Designations	-