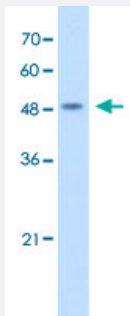


COPS2 polyclonal antibody

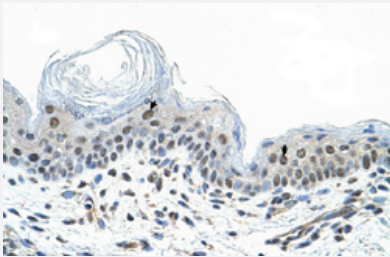
Catalog # PAB30005 Size 100 uL

Applications



Western Blot (Cell lysate)

Western Blot analysis of HEK 293T cell lysate with COPS2 polyclonal antibody (Cat # PAB30005) at 2.5 ug/mL working concentration.



Immunohistochemistry (Formalin/PFA-fixed paraffin-embedded sections)

Immunohistochemical staining (Formalin-fixed paraffin-embedded sections) of human skin with COPS2 polyclonal antibody (Cat # PAB30005) at 4-8 ug/mL working concentration.

Specification

Product Description	Rabbit polyclonal antibody raised against synthetic peptide of human COPS2.
Immunogen	A synthetic peptide corresponding to N-terminus of human COPS2.
Sequence	MSDMEDDFMCDDEEDYDLEYSEDSNSEPNVDLENQYNSKALKEDDPKAA
Host	Rabbit
Theoretical MW (kDa)	51
Reactivity	Human
Form	Liquid

Purification	Protein A purification
Recommend Usage	Immunohistochemistry (Formalin/PFA-fixed paraffin-embedded sections) (4-8 ug/mL) Western Blot (2.5 ug/mL) The optimal working dilution should be determined by the end user.
Storage Buffer	In PBS (2% sucrose, 0.09% sodium azide).
Storage Instruction	Store at 4°C up to 1 week. For long term storage store at -20°C. Aliquot to avoid repeated freezing and thawing.
Note	This product contains sodium azide: a POISONOUS AND HAZARDOUS SUBSTANCE which should be handled by trained staff only.

Applications

- Western Blot (Cell lysate)

Western Blot analysis of HEK 293T cell lysate with COPS2 polyclonal antibody (Cat # PAB30005) at 2.5 ug/mL working concentration.

- Immunohistochemistry (Formalin/PFA-fixed paraffin-embedded sections)

Immunohistochemical staining (Formalin-fixed paraffin-embedded sections) of human skin with COPS2 polyclonal antibody (Cat # PAB30005) at 4-8 ug/mL working concentration.

Gene Info — COPS2

Entrez GeneID	9318
GeneBank Accession#	NM_004236
Protein Accession#	NP_004227 ; P61203
Gene Name	COPS2
Gene Alias	ALIEN, CSN2, SGN2, TRIP15
Gene Description	COP9 constitutive photomorphogenic homolog subunit 2 (Arabidopsis)
Omim ID	604508
Gene Ontology	Hyperlink
Other Designations	COP9 constitutive photomorphogenic homolog subunit 2 COP9 signalosome complex subunit 2 JAB1-containing signalosome subunit 2 thyroid receptor interacting protein 15