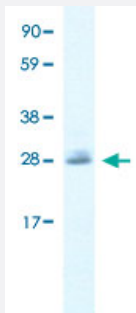


CLIC5 polyclonal antibody

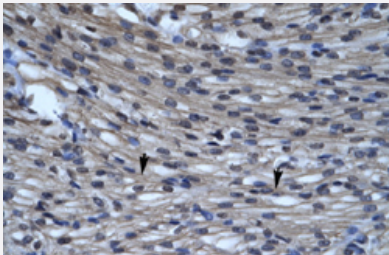
Catalog # PAB30002 Size 100 uL

Applications



Western Blot (Cell lysate)

Western Blot analysis of Jurkat cell lysate with CLIC5 polyclonal antibody (Cat # PAB30002) at 0.2-1 ug/mL working concentration.



Immunohistochemistry (Formalin/PFA-fixed paraffin-embedded sections)

Immunohistochemical staining (Formalin-fixed paraffin-embedded sections) of human heart with CLIC5 polyclonal antibody (Cat # PAB30002) at 4-8 ug/mL working concentration.

Specification

Product Description	Rabbit polyclonal antibody raised against synthetic peptide of human CLIC5.
Immunogen	A synthetic peptide corresponding to C-terminus of human CLIC5.
Sequence	YRNYDIPAEMTGLWRYLKNAYARDEFTNTCAADSEIELAYADVAKRLSRS
Host	Rabbit
Theoretical MW (kDa)	28
Reactivity	Human
Form	Liquid

Purification	Affinity purification
Recommend Usage	Immunohistochemistry (Formalin/PFA-fixed paraffin-embedded sections) (4-8 ug/mL) Western Blot (0.2-1 ug/mL) The optimal working dilution should be determined by the end user.
Storage Buffer	In PBS (2% sucrose, 0.09% sodium azide).
Storage Instruction	Store at 4°C. For long term storage store at -20°C. Aliquot to avoid repeated freezing and thawing.
Note	This product contains sodium azide: a POISONOUS AND HAZARDOUS SUBSTANCE which should be handled by trained staff only.

Applications

- Western Blot (Cell lysate)

Western Blot analysis of Jurkat cell lysate with CLIC5 polyclonal antibody (Cat # PAB30002) at 0.2-1 ug/mL working concentration.

- Immunohistochemistry (Formalin/PFA-fixed paraffin-embedded sections)

Immunohistochemical staining (Formalin-fixed paraffin-embedded sections) of human heart with CLIC5 polyclonal antibody (Cat # PAB30002) at 4-8 ug/mL working concentration.

Gene Info — CLIC5

Entrez GeneID	53405
GeneBank Accession#	NM_016929
Protein Accession#	NP_058625.Q53G01
Gene Name	CLIC5
Gene Alias	CLIC5B, FLJ90663, MST130, MSTP130, dJ447E21.4
Gene Description	chloride intracellular channel 5
Omim ID	607293
Gene Ontology	Hyperlink
Gene Summary	Chloride intracellular channels are involved in chloride ion transport within various subcellular compartments. CLIC5 specifically associates with the cytoskeleton of placenta microvilli.[supplied by OMIM]

Other Designations

OTTHUMP00000016538|chloride intracellular channel 5A

Disease

- [Migraine without Aura](#)
- [Tobacco Use Disorder](#)