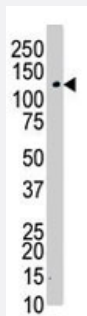


# CSF1R polyclonal antibody

Catalog # PAB3000

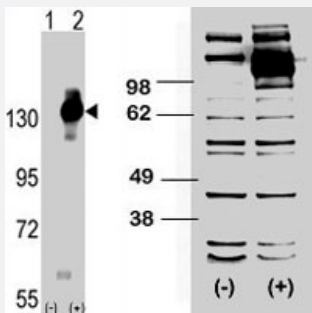
Size 400 uL

## Applications



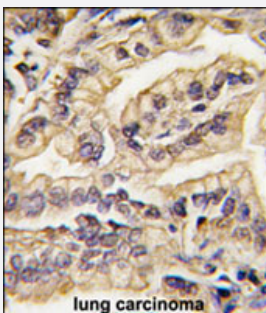
### Western Blot (Tissue lysate)

Western blot analysis of CSF1R polyclonal antibody (Cat # PAB3000) in human placenta. CSF1R (arrow) was detected using purified polyclonal antibody. Secondary HRP-anti-rabbit was used for signal visualization with chemiluminescence.



### Western Blot (Transfected lysate)

(LEFT) Western blot analysis of CSF1R (arrow) using rabbit CSF1R polyclonal antibody (Cat # PAB3000). 293 cell lysates (2 ug/lane) either nontransfected (Lane 1) or transiently transfected with the CSF1R gene (Lane 2) (Origene Technologies). (RIGHT) Western blot analysis of CSF1R polyclonal antibody (Cat # PAB3000) transiently transfected HEK-293 cell line lysate (1 ug/lane). CSF1R polyclonal antibody (arrow) was detected using the purified polyclonal antibody .



### Immunohistochemistry (Formalin/PFA-fixed paraffin-embedded sections)

Formalin-fixed and paraffin-embedded human lung carcinoma tissue reacted with CSF1R polyclonal antibody (Cat # PAB3000) , which was peroxidase-conjugated to the secondary antibody, followed by DAB staining. This data demonstrates the use of this antibody for immunohistochemistry; clinical relevance has not been evaluated.

## Specification

### Product Description

Rabbit polyclonal antibody raised against synthetic peptide of CSF1R.

<b>Immunogen</b>	A synthetic peptide (conjugated with KLH) corresponding to C-terminus of human CSF1R.
<b>Host</b>	Rabbit
<b>Reactivity</b>	Human
<b>Form</b>	Liquid
<b>Purification</b>	Protein G purification
<b>Recommend Usage</b>	Western Blot (1:1000) Immunohistochemistry (1:10-50) The optimal working dilution should be determined by the end user.
<b>Storage Buffer</b>	In PBS (0.09% sodium azide)
<b>Storage Instruction</b>	Store at 4°C. For long term storage store at -20°C. Aliquot to avoid repeated freezing and thawing.
<b>Note</b>	This product contains sodium azide: a POISONOUS AND HAZARDOUS SUBSTANCE which should be handled by trained staff only.

## Applications

- Western Blot (Tissue lysate)

Western blot analysis of CSF1R polyclonal antibody (Cat # PAB3000) in human placenta. CSF1R (arrow) was detected using purified polyclonal antibody. Secondary HRP-anti-rabbit was used for signal visualization with chemiluminescence.

- Western Blot (Transfected lysate)

(LEFT) Western blot analysis of CSF1R (arrow) using rabbit CSF1R polyclonal antibody (Cat # PAB3000). 293 cell lysates (2 ug/lane) either nontransfected (Lane 1) or transiently transfected with the CSF1R gene (Lane 2) (Origene Technologies).  
(RIGHT) Western blot analysis of CSF1R polyclonal antibody (Cat # PAB3000) transiently transfected HEK-293 cell line lysate (1 ug/lane). CSF1R polyclonal antibody (arrow) was detected using the purified polyclonal antibody .

- Immunohistochemistry (Formalin/PFA-fixed paraffin-embedded sections)

Formalin-fixed and paraffin-embedded human lung carcinoma tissue reacted with CSF1R polyclonal antibody (Cat # PAB3000) , which was peroxidase-conjugated to the secondary antibody, followed by DAB staining. This data demonstrates the use of this antibody for immunohistochemistry; clinical relevance has not been evaluated.

## Gene Info — CSF1R

**Entrez GeneID** [1436](#)

**Protein Accession#** [P07333](#)

Gene Name	CSF1R
Gene Alias	C-FMS, CD115, CSFR, FIM2, FMS
Gene Description	colony stimulating factor 1 receptor
Omim ID	<a href="#">164770</a>
Gene Ontology	<a href="#">Hyperlink</a>
Gene Summary	The protein encoded by this gene is the receptor for colony stimulating factor 1, a cytokine which controls the production, differentiation, and function of macrophages. This receptor mediates most if not all of the biological effects of this cytokine. Ligand binding activates the receptor kinase through a process of oligomerization and transphosphorylation. The encoded protein is a tyrosine kinase transmembrane receptor and member of the CSF1/PDGF receptor family of tyrosine-protein kinases. Mutations in this gene have been associated with a predisposition to myeloid malignancy. The first intron of this gene contains a transcriptionally inactive ribosomal protein L7 processed pseudogene oriented in the opposite direction. [provided by RefSeq]
Other Designations	CD115 antigen FMS proto-oncogene McDonough feline sarcoma viral (v-fms) oncogene homolog macrophage colony stimulating factor I receptor soluble CSF1R variant 1

## Publication Reference

- [Epigenetic consequences of AML1-ETO action at the human c-FMS locus.](#)

Follows GA, Tagoh H, Lefevre P, Hodge D, Morgan GJ, Bonifer C.

The EMBO Journal 2003 Jun; 22(11):2798.

- [C-fms expression correlates with monocytic differentiation in PML-RAR alpha+ acute promyelocytic leukemia.](#)

Riccioni R, Saulle E, Mili S, Sposi NM, Gualtierio M, Mauro N, Mancini M, Diverio D, Lo Coco F, Peschle C, Testa U.

Leukemia 2003 Jan; 17(1):98.

- [Vitamin D\(3\) and analogues modulate the expression of CSF-1 and its receptor in human dendritic cells.](#)

Zhu K, Glaser R, Mrowietz U.

Biochemical and Biophysical Research Communications 2002 Oct; 297(5):1211.

## Pathway

- [Cytokine-cytokine receptor interaction](#)
- [Endocytosis](#)

- [Hematopoietic cell lineage](#)
- [Pathways in cancer](#)

## Disease

- [Asthma](#)
- [Genetic Predisposition to Disease](#)
- [Heart Defects](#)
- [Lung Neoplasms](#)
- [Myelodysplastic Syndromes](#)
- [Pancreatic cancer](#)
- [Pancreatic Neoplasms](#)
- [Pulmonary Disease](#)
- [Purpura](#)
- [Tobacco Use Disorder](#)
- [Urinary Bladder Neoplasms](#)
- [Werner syndrome](#)