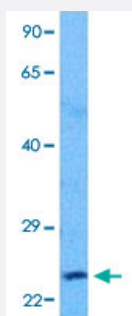


CITED1 polyclonal antibody

Catalog # PAB29999

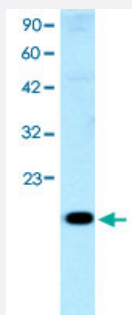
Size 100 uL

Applications



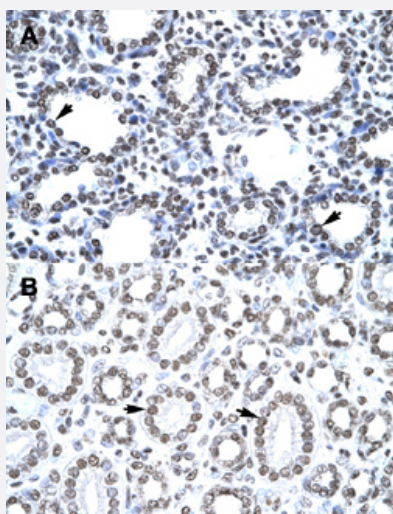
Western Blot (Tissue lysate)

Western Blot analysis of human fetal liver tissue lysate with CITED1 polyclonal antibody (Cat # PAB29999) at 1 ug/mL working concentration.



Western Blot (Cell lysate)

Western Blot analysis of HepG2 cell lysate with CITED1 polyclonal antibody (Cat # PAB29999) at 0.2-1 ug/mL working concentration.



Immunohistochemistry (Formalin/PFA-fixed paraffin-embedded sections)

Immunohistochemical staining (Formalin-fixed paraffin-embedded sections) of human lung (A) and human kidney (B) with CITED1 polyclonal antibody (Cat # PAB29999) at 4-8 ug/mL working concentration.

Specification

Product Description	Rabbit polyclonal antibody raised against synthetic peptide of human CITED1.
Immunogen	A synthetic peptide corresponding to internal region of human CITED1.
Sequence	IGSPTTTPPTKPPSFNLHPAPHLLASMLQLQLNSQYQGMAAATPGQPGEA
Host	Rabbit
Theoretical MW (kDa)	20, 23
Reactivity	Human
Form	Liquid
Purification	Affinity purification
Recommend Usage	Immunohistochemistry (Formalin/PFA-fixed paraffin-embedded sections) (4-8 ug/mL) Western Blot The optimal working dilution should be determined by the end user.
Storage Buffer	In PBS (2% sucrose, 0.09% sodium azide).
Storage Instruction	Store at 4°C. For long term storage store at -20°C. Aliquot to avoid repeated freezing and thawing.
Note	This product contains sodium azide: a POISONOUS AND HAZARDOUS SUBSTANCE which should be handled by trained staff only.

Applications

- Western Blot (Tissue lysate)

Western Blot analysis of human fetal liver tissue lysate with CITED1 polyclonal antibody (Cat # PAB29999) at 1 ug/mL working concentration.

- Western Blot (Cell lysate)

Western Blot analysis of HepG2 cell lysate with CITED1 polyclonal antibody (Cat # PAB29999) at 0.2-1 ug/mL working concentration.

- Immunohistochemistry (Formalin/PFA-fixed paraffin-embedded sections)

Immunohistochemical staining (Formalin-fixed paraffin-embedded sections) of human lung (A) and human kidney (B) with CITED1 polyclonal antibody (Cat # PAB29999) at 4-8 ug/mL working concentration.

Gene Info — CITED1

Entrez GeneID [4435](#)**GeneBank Accession#** [NM_004143](#)**Protein Accession#** [NP_004134.Q99966](#)**Gene Name** CITED1**Gene Alias** MSG1**Gene Description** Cbp/p300-interacting transactivator, with Glu/Asp-rich carboxy-terminal domain, 1**Omim ID** [300149](#)**Gene Ontology** [Hyperlink](#)

Gene Summary This gene encodes a member of the CREB-binding protein/p300-interacting transactivator with Asp/Glu-rich C-terminal domain (CITED) family of proteins. The encoded protein, also known as melanocyte-specific gene 1, may function as a transcriptional coactivator and may play a role in pigmentation of melanocytes. Alternatively spliced transcript variants have been described. [provided by RefSeq]

Other Designations Cbp/p300-interacting transactivator 1|OTTHUMP00000023529|OTTHUMP00000023530