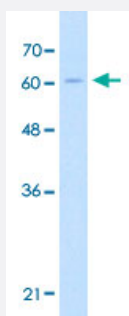


CHAF1B polyclonal antibody

Catalog # PAB29994

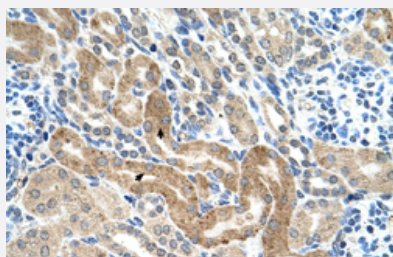
Size 100 uL

Applications



Western Blot (Cell lysate)

Western Blot analysis of Jurkat cell lysate with CHAF1B polyclonal antibody (Cat # PAB29994) at 5 ug/mL working concentration.



Immunohistochemistry (Formalin/PFA-fixed paraffin-embedded sections)

Immunohistochemical staining (Formalin-fixed paraffin-embedded sections) of human kidney with CHAF1B polyclonal antibody (Cat # PAB29994) at 4-8 ug/mL working concentration.

Specification

Product Description	Rabbit polyclonal antibody raised against synthetic peptide of human CHAF1B.
Immunogen	A synthetic peptide corresponding to C-terminus of human CHAF1B.
Sequence	PPSSVPTSVISTPSTEEIQSETPGDAQGSPPELKRPRLDENKGGTESLDP
Host	Rabbit
Theoretical MW (kDa)	61
Reactivity	Human
Form	Liquid

Purification	Protein A purification
Recommend Usage	Immunohistochemistry (Formalin/PFA-fixed paraffin-embedded sections) (4-8 ug/mL) Western Blot (5 ug/mL) The optimal working dilution should be determined by the end user.
Storage Buffer	In PBS (2% sucrose, 0.09% sodium azide).
Storage Instruction	Store at 4°C. For long term storage store at -20°C. Aliquot to avoid repeated freezing and thawing.
Note	This product contains sodium azide: a POISONOUS AND HAZARDOUS SUBSTANCE which should be handled by trained staff only.

Applications

- Western Blot (Cell lysate)

Western Blot analysis of Jurkat cell lysate with CHAF1B polyclonal antibody (Cat # PAB29994) at 5 ug/mL working concentration.

- Immunohistochemistry (Formalin/PFA-fixed paraffin-embedded sections)

Immunohistochemical staining (Formalin-fixed paraffin-embedded sections) of human kidney with CHAF1B polyclonal antibody (Cat # PAB29994) at 4-8 ug/mL working concentration.

Gene Info — CHAF1B

Entrez GeneID	8208
GeneBank Accession#	NM_005441
Protein Accession#	NP_005432:Q13112
Gene Name	CHAF1B
Gene Alias	CAF-1, CAF-IP60, CAF1, CAF1A, CAF1P60, MPHOSPH7, MPP7
Gene Description	chromatin assembly factor 1, subunit B (p60)
Omim ID	601245
Gene Ontology	Hyperlink

Gene Summary

Chromatin assembly factor I (CAF-I) is required for the assembly of histone octamers onto newly-replicated DNA. CAF-I is composed of three protein subunits, p50, p60, and p150. The protein encoded by this gene corresponds to the p60 subunit and is required for chromatin assembly after replication. The encoded protein is differentially phosphorylated in a cell cycle-dependent manner. In addition, it is normally found in the nucleus except during mitosis, when it is released into the cytoplasm. This protein is a member of the WD-repeat HIR1 family and may also be involved in DNA repair. [provided by RefSeq]

Other Designations

CAF-1 subunit B|CAF-I 60 kDa subunit|M-phase phosphoprotein 7|chromatin assembly factor 1 subunit B|chromatin assembly factor I p60 subunit|human chromatin assembly factor-I p60 subunit