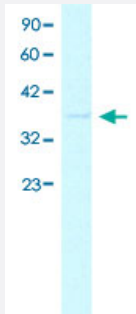


CDX4 polyclonal antibody

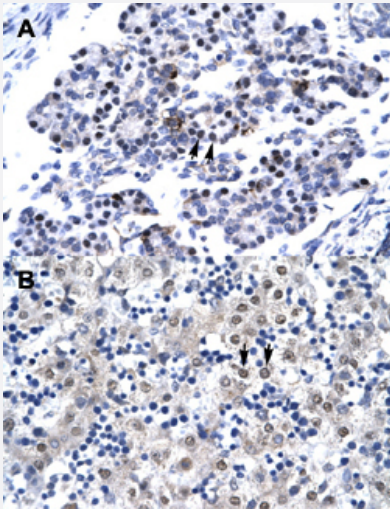
Catalog # PAB29993 Size 100 uL

Applications



Western Blot (Cell lysate)

Western Blot analysis of HepG2 cell lysate with CDX4 polyclonal antibody (Cat # PAB29993) at 0.2-1 ug/mL working concentration.



Immunohistochemistry (Formalin/PFA-fixed paraffin-embedded sections)

Immunohistochemical staining (Formalin-fixed paraffin-embedded sections) of human pancreas (A) and human liver (B) with CDX4 polyclonal antibody (Cat # PAB29993) at 4-8 ug/mL working concentration.

Specification

Product Description	Rabbit polyclonal antibody raised against synthetic peptide of human CDX4.
Immunogen	A synthetic peptide corresponding to C-terminus of human CDX4.
Sequence	KKISQFENSGGSVQSDSDSISPGELPNTFFFTTPSAVRGFQPIEQQVIVS
Host	Rabbit

Theoretical MW (kDa)	30
Reactivity	Human
Form	Liquid
Purification	Affinity purification
Recommend Usage	Immunohistochemistry (Formalin/PFA-fixed paraffin-embedded sections) (4-8 ug/mL) Western Blot (0.2-1 ug/mL) The optimal working dilution should be determined by the end user.
Storage Buffer	In PBS (2% sucrose, 0.09% sodium azide).
Storage Instruction	Store at 4°C. For long term storage store at -20°C. Aliquot to avoid repeated freezing and thawing.
Note	This product contains sodium azide: a POISONOUS AND HAZARDOUS SUBSTANCE which should be handled by trained staff only.

Applications

- Western Blot (Cell lysate)

Western Blot analysis of HepG2 cell lysate with CDX4 polyclonal antibody (Cat # PAB29993) at 0.2-1 ug/mL working concentration.

- Immunohistochemistry (Formalin/PFA-fixed paraffin-embedded sections)

Immunohistochemical staining (Formalin-fixed paraffin-embedded sections) of human pancreas (A) and human liver (B) with CDX4 polyclonal antibody (Cat # PAB29993) at 4-8 ug/mL working concentration.

Gene Info — CDX4

Entrez GeneID	1046
GeneBank Accession#	NM_005193
Protein Accession#	NP_005184;O14627
Gene Name	CDX4
Gene Alias	-
Gene Description	caudal type homeobox 4
Omim ID	300025

Gene Ontology[Hyperlink](#)**Other Designations**

OTTHUMP00000023566|caudal type homeo box transcription factor 4|caudal type homeobox transcription factor 4