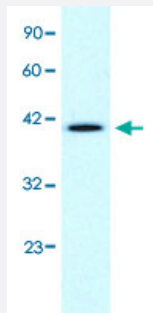


CCRN4L polyclonal antibody

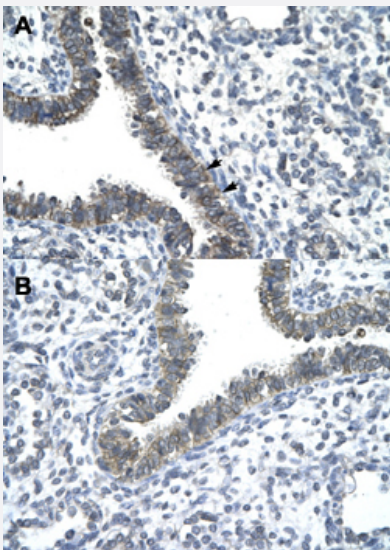
Catalog # PAB29991 Size 100 uL

Applications



Western Blot (Cell lysate)

Western Blot analysis of Daudi cell lysate with CCRN4L polyclonal antibody (Cat # PAB29991) at 1-2 ug/mL working concentration.



Immunohistochemistry (Formalin/PFA-fixed paraffin-embedded sections)

Immunohistochemical staining (Formalin-fixed paraffin-embedded sections) of human lung (A, B) with CCRN4L polyclonal antibody (Cat # PAB29991) at 4-8 ug/mL working concentration.

Specification

| | |
|----------------------------|--|
| Product Description | Rabbit polyclonal antibody raised against synthetic peptide of human CCRN4L. |
| Immunogen | A synthetic peptide corresponding to N-terminus of human CCRN4L. |
| Sequence | LNSSAASQHPEYLVSPDPEHLEPIDPKELLEECRAVLHTRPPRFQRDFVD |
| Host | Rabbit |

| | |
|----------------------|--|
| Theoretical MW (kDa) | 48 |
| Reactivity | Human |
| Form | Liquid |
| Purification | Protein A purification |
| Recommend Usage | Immunohistochemistry (Formalin/PFA-fixed paraffin-embedded sections) (4-8 ug/mL) Western Blot (1-2 ug/mL) The optimal working dilution should be determined by the end user. |
| Storage Buffer | In PBS (2% sucrose, 0.09% sodium azide). |
| Storage Instruction | Store at 4°C. For long term storage store at -20°C. Aliquot to avoid repeated freezing and thawing. |
| Note | This product contains sodium azide: a POISONOUS AND HAZARDOUS SUBSTANCE which should be handled by trained staff only. |

Applications

- Western Blot (Cell lysate)

Western Blot analysis of Daudi cell lysate with CCRN4L polyclonal antibody (Cat # PAB29991) at 1-2 ug/mL working concentration.

- Immunohistochemistry (Formalin/PFA-fixed paraffin-embedded sections)

Immunohistochemical staining (Formalin-fixed paraffin-embedded sections) of human lung (A, B) with CCRN4L polyclonal antibody (Cat # PAB29991) at 4-8 ug/mL working concentration.

Gene Info — CCRN4L

| | |
|---------------------|--|
| Entrez GeneID | 25819 |
| GeneBank Accession# | NM_012118 |
| Protein Accession# | NP_036250;Q9UK39 |
| Gene Name | CCRN4L |
| Gene Alias | CCR4L, MGC142054, MGC142060, MGC4120817, MGC78549, NOC |
| Gene Description | CCR4 carbon catabolite repression 4-like (S. cerevisiae) |
| Omim ID | 608468 |

Gene Ontology

[Hyperlink](#)

Gene Summary

The protein encoded by this gene is highly similar to Nocturnin, a gene identified as a circadian clock regulated gene in *Xenopus laevis*. This protein and Nocturnin protein share similarity with the C-terminal domain of a yeast transcription factor, carbon catabolite repression 4 (CCR4). The mRNA abundance of a similar gene in mouse has been shown to exhibit circadian rhythmicity, which suggests a role for this protein in clock function or as a circadian clock effector. [provided by RefSeq]

Other Designations

CCR4 carbon catabolite repression 4-like|CCR4-like (carbon catabolite repression 4, *S.cerevisiae*)|nocturnin

Disease

- [Cardiovascular Diseases](#)
- [Diabetes Mellitus](#)
- [Edema](#)