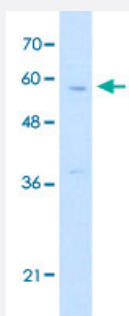


# CCDC112 polyclonal antibody

Catalog # PAB29989

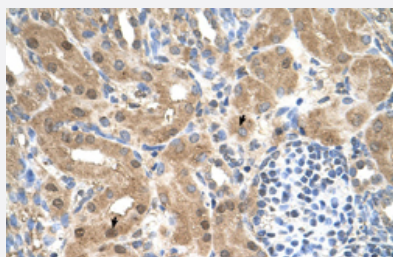
Size 100 uL

## Applications



### Western Blot (Cell lysate)

Western Blot analysis of Jurkat cell lysate with CCDC112 polyclonal antibody (Cat # PAB29989) at 1.25 ug/mL working concentration.



### Immunohistochemistry (Formalin/PFA-fixed paraffin-embedded sections)

Immunohistochemical staining (Formalin-fixed paraffin-embedded sections) of human kidney with CCDC112 polyclonal antibody (Cat # PAB29989) at 4-8 ug/mL working concentration.

## Specification

Product Description	Rabbit polyclonal antibody raised against synthetic peptide of human CCDC112.
Immunogen	A synthetic peptide corresponding to N-terminus of human CCDC112.
Sequence	VRTAEKFKNQVINMEKDKHSHFYNQKSDFRIEHSMLEELNKLHSRKTE
Host	Rabbit
Theoretical MW (kDa)	62
Reactivity	Human
Form	Liquid

<b>Purification</b>	Protein A purification
<b>Recommend Usage</b>	Immunohistochemistry (Formalin/PFA-fixed paraffin-embedded sections) (4-8 ug/mL) Western Blot (1.25 ug/mL) The optimal working dilution should be determined by the end user.
<b>Storage Buffer</b>	In PBS (2% sucrose, 0.09% sodium azide).
<b>Storage Instruction</b>	Store at 4°C. For long term storage store at -20°C. Aliquot to avoid repeated freezing and thawing.
<b>Note</b>	This product contains sodium azide: a POISONOUS AND HAZARDOUS SUBSTANCE which should be handled by trained staff only.

## Applications

- Western Blot (Cell lysate)

Western Blot analysis of Jurkat cell lysate with CCDC112 polyclonal antibody (Cat # PAB29989) at 1.25 ug/mL working concentration.

- Immunohistochemistry (Formalin/PFA-fixed paraffin-embedded sections)

Immunohistochemical staining (Formalin-fixed paraffin-embedded sections) of human kidney with CCDC112 polyclonal antibody (Cat # PAB29989) at 4-8 ug/mL working concentration.

## Gene Info — CCDC112

<b>Entrez GeneID</b>	<a href="#">153733</a>
<b>GeneBank Accession#</b>	<a href="#">NM_001040440</a>
<b>Protein Accession#</b>	<a href="#">NP_001035530:Q8NEF3</a>
<b>Gene Name</b>	CCDC112
<b>Gene Alias</b>	MBC1, MGC39633
<b>Gene Description</b>	coiled-coil domain containing 112
<b>Gene Ontology</b>	<a href="#">Hyperlink</a>
<b>Other Designations</b>	mutated in bladder cancer 1