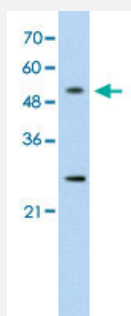


CACNB1 polyclonal antibody

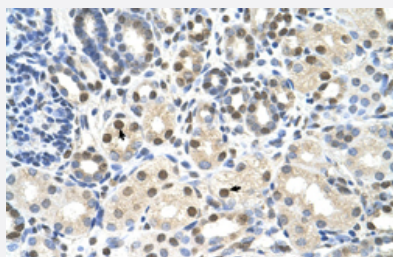
Catalog # PAB29986 Size 100 uL

Applications



Western Blot (Cell lysate)

Western Blot analysis of Jurkat cell lysate with CACNB1 polyclonal antibody (Cat # PAB29986) at 0.2-1 ug/mL working concentration.



Immunohistochemistry (Formalin/PFA-fixed paraffin-embedded sections)

Immunohistochemical staining (Formalin-fixed paraffin-embedded sections) of human kidney with CACNB1 polyclonal antibody (Cat # PAB29986) at 4-8 ug/mL working concentration.

Specification

Product Description	Rabbit polyclonal antibody raised against synthetic peptide of human CACNB1.
Immunogen	A synthetic peptide corresponding to internal region of human CACNB1.
Sequence	TRRPTPPASGNEMTNLAFELDPLELEEEEAELGEQSGSAKTSVSSVTTPP
Host	Rabbit
Theoretical MW (kDa)	58
Reactivity	Human
Form	Liquid

Purification	Affinity purification
Recommend Usage	Immunohistochemistry (Formalin/PFA-fixed paraffin-embedded sections) (4-8 ug/mL) Western Blot (0.2-1 ug/mL) The optimal working dilution should be determined by the end user.
Storage Buffer	In PBS (2% sucrose, 0.09% sodium azide).
Storage Instruction	Store at 4°C. For long term storage store at -20°C. Aliquot to avoid repeated freezing and thawing.
Note	This product contains sodium azide: a POISONOUS AND HAZARDOUS SUBSTANCE which should be handled by trained staff only.

Applications

- Western Blot (Cell lysate)

Western Blot analysis of Jurkat cell lysate with CACNB1 polyclonal antibody (Cat # PAB29986) at 0.2-1 ug/mL working concentration.

- Immunohistochemistry (Formalin/PFA-fixed paraffin-embedded sections)

Immunohistochemical staining (Formalin-fixed paraffin-embedded sections) of human kidney with CACNB1 polyclonal antibody (Cat # PAB29986) at 4-8 ug/mL working concentration.

Gene Info — CACNB1

Entrez GeneID	782
GeneBank Accession#	NM_199247
Protein Accession#	NP_954855.Q02641-2
Gene Name	CACNB1
Gene Alias	CAB1, CACNLB1, CCHLB1, MGC41896
Gene Description	calcium channel, voltage-dependent, beta 1 subunit
Omim ID	114207
Gene Ontology	Hyperlink

Gene Summary

The protein encoded by this gene belongs to the calcium channel beta subunit family. It plays an important role in the calcium channel by modulating G protein inhibition, increasing peak calcium current, controlling the alpha-1 subunit membrane targeting and shifting the voltage dependence of activation and inactivation. Alternative splicing occurs at this locus and three transcript variants encoding three distinct isoforms have been identified. [provided by RefSeq]

Other Designations

OTTHUMP00000164286|calcium channel, L type, beta 1 polypeptide|dihydropyridine-sensitive L-type, calcium channel beta-1 subunit

Pathway

- [Arrhythmogenic right ventricular cardiomyopathy \(ARVC\)](#)
- [Cardiac muscle contraction](#)
- [Hypertrophic cardiomyopathy \(HCM\)](#)
- [MAPK signaling pathway](#)