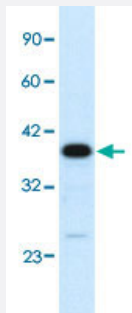


# C4BPB polyclonal antibody

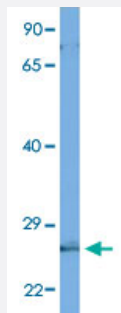
Catalog # PAB29985      Size 100 uL

## Applications



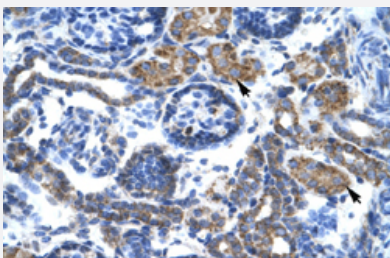
### Western Blot (Tissue lysate)

Western Blot analysis of human fetal liver tissue lysate with C4BPB polyclonal antibody (Cat # PAB29985) at 0.2-1 ug/mL working concentration.



### Western Blot (Cell lysate)

Western Blot analysis of 721 B lymphoblast cell lysate with C4BPB polyclonal antibody (Cat # PAB29985) at 1 ug/mL working concentration.



### Immunohistochemistry (Formalin/PFA-fixed paraffin-embedded sections)

Immunohistochemical staining (Formalin-fixed paraffin-embedded sections) of human kidney with C4BPB polyclonal antibody (Cat # PAB29985) at 4-8 ug/mL working concentration.

## Specification

### Product Description

Rabbit polyclonal antibody raised against synthetic peptide of human C4BPB.

### Immunogen

A synthetic peptide corresponding to N-terminus of human C4BPB.

Sequence	CCLMVAWRVSASDAEHCPPELPPVDNSIFVAKEVEGQILGTVCIKGYHLV
Host	Rabbit
Theoretical MW (kDa)	28
Reactivity	Human
Form	Liquid
Purification	Affinity purification
Recommend Usage	Immunohistochemistry (Formalin/PFA-fixed paraffin-embedded sections) (4-8 ug/mL) Western Blot The optimal working dilution should be determined by the end user.
Storage Buffer	In PBS (2% sucrose, 0.09% sodium azide).
Storage Instruction	Store at 4°C. For long term storage store at -20°C. Aliquot to avoid repeated freezing and thawing.
Note	This product contains sodium azide: a POISONOUS AND HAZARDOUS SUBSTANCE which should be handled by trained staff only.

## Applications

- Western Blot (Tissue lysate)

Western Blot analysis of human fetal liver tissue lysate with C4BPB polyclonal antibody (Cat # PAB29985) at 0.2-1 ug/mL working concentration.

- Western Blot (Cell lysate)

Western Blot analysis of 721 B lymphoblast cell lysate with C4BPB polyclonal antibody (Cat # PAB29985) at 1 ug/mL working concentration.

- Immunohistochemistry (Formalin/PFA-fixed paraffin-embedded sections)

Immunohistochemical staining (Formalin-fixed paraffin-embedded sections) of human kidney with C4BPB polyclonal antibody (Cat # PAB29985) at 4-8 ug/mL working concentration.

## Gene Info — C4BPB

Entrez GeneID	<a href="#">725</a>
GeneBank Accession#	<a href="#">NM_000716</a>
Protein Accession#	<a href="#">NP_000707:P20851</a>

Gene Name	C4BPB
Gene Alias	C4BP
Gene Description	complement component 4 binding protein, beta
Omim ID	<a href="#">120831</a>
Gene Ontology	<a href="#">Hyperlink</a>
Gene Summary	<p>This gene encodes a member of a superfamily of proteins composed predominantly of tandemly arrayed short consensus repeats of approximately 60 amino acids. A single, unique beta-chain encoded by this gene assembles with seven identical alpha-chains into the predominant isoform of C4b-binding protein, a multimeric protein that controls activation of the complement cascade through the classical pathway. C4b-binding protein has a regulatory role in the coagulation system also, mediated through the beta-chain binding of protein S, a vitamin K-dependent protein that serves as a cofactor of activated protein C. The genes encoding both alpha and beta chains are located adjacent to each other on human chromosome 1 in the regulator of complement activation gene cluster. Alternative splicing gives rise to multiple transcript variants. [provided by RefSeq]</p>
Other Designations	C4b binding protein, beta chain OTTHUMP00000034288 OTTHUMP00000034289 OTTHUMP00000034375 complement component 4 binding protein, beta chain complement component 4-binding protein, beta

## Pathway

- [Complement and coagulation cascades](#)

## Disease

- [Birth Weight](#)
- [Genetic Predisposition to Disease](#)
- [Glioblastoma](#)
- [Glioma](#)
- [Leukemia](#)
- [Lymphoma](#)
- [Macular Degeneration](#)
- [Meningeal Neoplasms](#)
- [Meningioma](#)

- [Tobacco Use Disorder](#)
- [Venous Thrombosis](#)