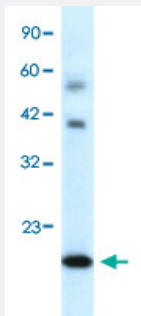


# BOLA1 polyclonal antibody

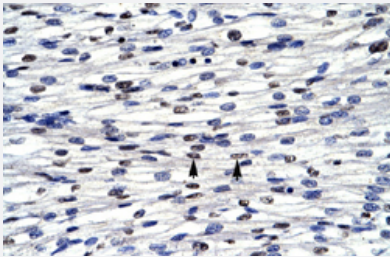
Catalog # PAB29982      Size 100 uL

## Applications



### Western Blot (Tissue lysate)

Western Blot analysis of human fetal heart tissue lysate with BOLA1 polyclonal antibody (Cat # PAB29982) at 0.2-1 ug/mL working concentration.



### Immunohistochemistry (Formalin/PFA-fixed paraffin-embedded sections)

Immunohistochemical staining (Formalin-fixed paraffin-embedded sections) of human heart with BOLA1 polyclonal antibody (Cat # PAB29982) at 4-8 ug/mL working concentration.

## Specification

Product Description	Rabbit polyclonal antibody raised against synthetic peptide of human BOLA1.
Immunogen	A synthetic peptide corresponding to N-terminus of human BOLA1.
Sequence	AGSGAIGPVEAAIRTKLEEALSPEVLELRNESGGHAVPPGSETHFRVAVV
Host	Rabbit
Theoretical MW (kDa)	14
Reactivity	Human
Form	Liquid

<b>Purification</b>	Affinity purification
<b>Recommend Usage</b>	Immunohistochemistry (Formalin/PFA-fixed paraffin-embedded sections) (4-8 ug/mL) Western Blot (0.2-1 ug/mL) The optimal working dilution should be determined by the end user.
<b>Storage Buffer</b>	In PBS (2% sucrose, 0.09% sodium azide).
<b>Storage Instruction</b>	Store at 4°C. For long term storage store at -20°C. Aliquot to avoid repeated freezing and thawing.
<b>Note</b>	This product contains sodium azide: a POISONOUS AND HAZARDOUS SUBSTANCE which should be handled by trained staff only.

## Applications

- Western Blot (Tissue lysate)

Western Blot analysis of human fetal heart tissue lysate with BOLA1 polyclonal antibody (Cat # PAB29982) at 0.2-1 ug/mL working concentration.

- Immunohistochemistry (Formalin/PFA-fixed paraffin-embedded sections)

Immunohistochemical staining (Formalin-fixed paraffin-embedded sections) of human heart with BOLA1 polyclonal antibody (Cat # PAB29982) at 4-8 ug/mL working concentration.

## Gene Info — BOLA1

<b>Entrez GeneID</b>	<a href="#">51027</a>
<b>GeneBank Accession#</b>	<a href="#">NM_016074</a>
<b>Protein Accession#</b>	<a href="#">NP_057158.Q9Y3E2</a>
<b>Gene Name</b>	BOLA1
<b>Gene Alias</b>	CGI-143, MGC75015, RP11-196G18.18
<b>Gene Description</b>	bolA homolog 1 (E. coli)
<b>Gene Ontology</b>	<a href="#">Hyperlink</a>
<b>Other Designations</b>	OTTHUMP00000013910 OTTHUMP00000013911 OTTHUMP00000013912 bolA-like 1