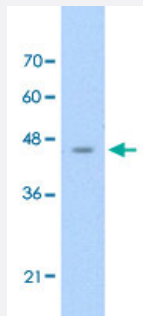


ASS1 polyclonal antibody

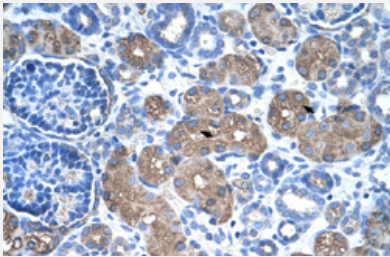
Catalog # PAB29974 Size 100 uL

Applications



Western Blot (Cell lysate)

Western Blot analysis of HepG2 cell lysate with ASS1 polyclonal antibody (Cat # PAB29974) at 2.5 ug/mL working concentration.



Immunohistochemistry (Formalin/PFA-fixed paraffin-embedded sections)

Immunohistochemical staining (Formalin-fixed paraffin-embedded sections) of human kidney with ASS1 polyclonal antibody (Cat # PAB29974) at 4-8 ug/mL working concentration.

Specification

Product Description	Rabbit polyclonal antibody raised against synthetic peptide of human ASS1.
Immunogen	A synthetic peptide corresponding to C-terminus of human ASS1.
Sequence	SVLKGQVYILGRESPLSLYNEELVSMNVQGDYEPTDATGFININSLRLKE
Host	Rabbit
Theoretical MW (kDa)	45
Reactivity	Human
Form	Liquid

Purification	Protein A purification
Recommend Usage	Immunohistochemistry (Formalin/PFA-fixed paraffin-embedded sections) (4-8 ug/mL) Western Blot (2.5 ug/mL) The optimal working dilution should be determined by the end user.
Storage Buffer	In PBS (2% sucrose, 0.09% sodium azide).
Storage Instruction	Store at 4°C. For long term storage store at -20°C. Aliquot to avoid repeated freezing and thawing.
Note	This product contains sodium azide: a POISONOUS AND HAZARDOUS SUBSTANCE which should be handled by trained staff only.

Applications

- Western Blot (Cell lysate)

Western Blot analysis of HepG2 cell lysate with ASS1 polyclonal antibody (Cat # PAB29974) at 2.5 ug/mL working concentration.

- Immunohistochemistry (Formalin/PFA-fixed paraffin-embedded sections)

Immunohistochemical staining (Formalin-fixed paraffin-embedded sections) of human kidney with ASS1 polyclonal antibody (Cat # PAB29974) at 4-8 ug/mL working concentration.

Gene Info — ASS1

Entrez GeneID	445
GeneBank Accession#	NM_054012
Protein Accession#	NP_446464:P00966
Gene Name	ASS1
Gene Alias	ASS, CTLN1
Gene Description	argininosuccinate synthetase 1
Omim ID	215700 603470
Gene Ontology	Hyperlink

Gene Summary

The protein encoded by this gene catalyzes the penultimate step of the arginine biosynthetic pathway. There are approximately 10 to 14 copies of this gene including the pseudogenes scattered across the human genome, among which the one located on chromosome 9 appears to be the only functional gene for argininosuccinate synthetase. Mutations in the chromosome 9 copy of ASS cause citrullinemia. Two transcript variants encoding the same protein have been found for this gene. [provided by RefSeq]

Other Designations

OTTHUMP00000022362|OTTHUMP00000022363|OTTHUMP00000022364|citrulline--aspartate ligase

Pathway

- [Alanine](#)
- [Arginine and proline metabolism](#)
- [Metabolic pathways](#)

Disease

- [Cardiovascular Diseases](#)
- [Diabetes Mellitus](#)
- [Edema](#)