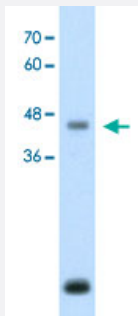


ASPN polyclonal antibody

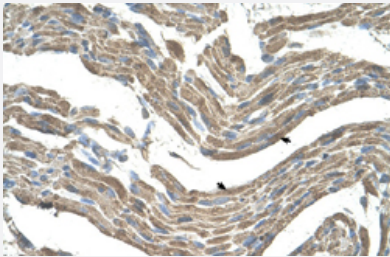
Catalog # PAB29972 Size 100 uL

Applications



Western Blot (Cell lysate)

Western Blot analysis of HepG2 cell lysate with ASPN polyclonal antibody (Cat # PAB29972) at 2.5 ug/mL working concentration.



Immunohistochemistry (Formalin/PFA-fixed paraffin-embedded sections)

Immunohistochemical staining (Formalin-fixed paraffin-embedded sections) of human muscle with ASPN polyclonal antibody (Cat # PAB29972) at 4-8 ug/mL working concentration.

Specification

Product Description	Rabbit polyclonal antibody raised against synthetic peptide of human ASPN.
Immunogen	A synthetic peptide corresponding to internal region of human ASPN.
Sequence	NKISTVELEDFKRYKELQRLGLGNNKITDIENGLANIPRVREIHLENNK
Host	Rabbit
Theoretical MW (kDa)	42
Reactivity	Human
Form	Liquid

Purification	Protein A purification
Recommend Usage	Immunohistochemistry (Formalin/PFA-fixed paraffin-embedded sections) (4-8 ug/mL) Western Blot (2.5 ug/mL) The optimal working dilution should be determined by the end user.
Storage Buffer	In PBS (2% sucrose, 0.09% sodium azide).
Storage Instruction	Store at 4°C. For long term storage store at -20°C. Aliquot to avoid repeated freezing and thawing.
Note	This product contains sodium azide: a POISONOUS AND HAZARDOUS SUBSTANCE which should be handled by trained staff only.

Applications

- Western Blot (Cell lysate)

Western Blot analysis of HepG2 cell lysate with ASPN polyclonal antibody (Cat # PAB29972) at 2.5 ug/mL working concentration.

- Immunohistochemistry (Formalin/PFA-fixed paraffin-embedded sections)

Immunohistochemical staining (Formalin-fixed paraffin-embedded sections) of human muscle with ASPN polyclonal antibody (Cat # PAB29972) at 4-8 ug/mL working concentration.

Gene Info — ASPN

Entrez GeneID	54829
GeneBank Accession#	NM_017680
Protein Accession#	NP_060150.Q9BXN1
Gene Name	ASPN
Gene Alias	FLJ20129, PLAP1, SLRR1C
Gene Description	asporin
Omim ID	165720 608135
Gene Ontology	Hyperlink
Gene Summary	ASPN belongs to a family of leucine-rich repeat (LRR) proteins associated with the cartilage matrix. The name asporin reflects the unique aspartate-rich N terminus and the overall similarity to decorin (MIM 125255) (Lorenzo et al., 2001 [PubMed 11152692]).[supplied by OMIM]

Other Designations

OTTHUMP00000021657|asporin (LRR class 1)|asporin proteoglycan|periodontal ligament associated protein 1|small leucine-rich protein 1C

Disease

- [Arthritis](#)
- [Genetic Predisposition to Disease](#)
- [Osteoarthritis](#)
- [Spondylitis](#)