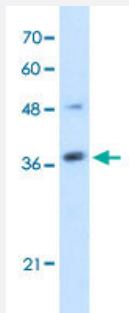


ARMCX6 polyclonal antibody

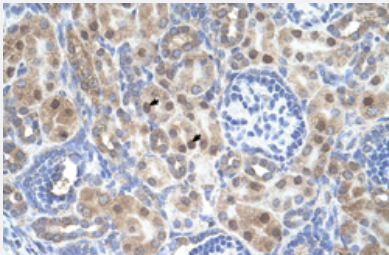
Catalog # PAB29966 Size 100 uL

Applications



Western Blot (Cell lysate)

Western Blot analysis of Jurkat cell lysate with ARM CX6 polyclonal antibody (Cat # PAB29966) at 5 ug/mL working concentration.



Immunohistochemistry (Formalin/PFA-fixed paraffin-embedded sections)

Immunohistochemical staining (Formalin-fixed paraffin-embedded sections) of human kidney with ARM CX6 polyclonal antibody (Cat # PAB29966) at 4-8 ug/mL working concentration.

Specification

Product Description	Rabbit polyclonal antibody raised against synthetic peptide of human ARM CX6.
Immunogen	A synthetic peptide corresponding to N-terminus of human ARM CX6.
Sequence	TMARPWTEGDGWTEPGAPGGTEDRPSGGGKANRAHPIKQRPFPYEHKNTW
Host	Rabbit
Theoretical MW (kDa)	33
Reactivity	Human
Form	Liquid

Purification	Protein A purification
Recommend Usage	Immunohistochemistry (Formalin/PFA-fixed paraffin-embedded sections) (4-8 ug/mL) Western Blot (5 ug/mL) The optimal working dilution should be determined by the end user.
Storage Buffer	In PBS (2% sucrose, 0.09% sodium azide).
Storage Instruction	Store at 4°C. For long term storage store at -20°C. Aliquot to avoid repeated freezing and thawing.
Note	This product contains sodium azide: a POISONOUS AND HAZARDOUS SUBSTANCE which should be handled by trained staff only.

Applications

- Western Blot (Cell lysate)

Western Blot analysis of Jurkat cell lysate with ARMCX6 polyclonal antibody (Cat # PAB29966) at 5 ug/mL working concentration.

- Immunohistochemistry (Formalin/PFA-fixed paraffin-embedded sections)

Immunohistochemical staining (Formalin-fixed paraffin-embedded sections) of human kidney with ARMCX6 polyclonal antibody (Cat # PAB29966) at 4-8 ug/mL working concentration.

Gene Info — ARMCX6

Entrez GeneID	54470
GeneBank Accession#	NM_019007
Protein Accession#	NP_061880:Q7L4S7
Gene Name	ARMCX6
Gene Alias	FLJ20811
Gene Description	armadillo repeat containing, X-linked 6
Gene Ontology	Hyperlink
Gene Summary	O
Other Designations	OTTHUMP00000023687