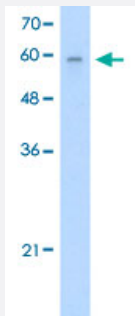


# ARIH2 polyclonal antibody

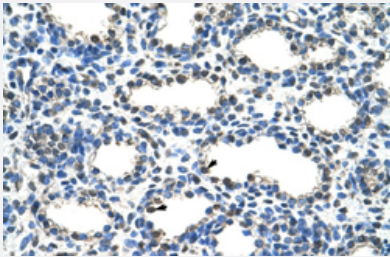
Catalog # PAB29965      Size 100 uL

## Applications



### Western Blot (Cell lysate)

Western Blot analysis of Jurkat cell lysate with ARIH2 polyclonal antibody (Cat # PAB29965) at 2.5 ug/mL working concentration.



### Immunohistochemistry (Formalin/PFA-fixed paraffin-embedded sections)

Immunohistochemical staining (Formalin-fixed paraffin-embedded sections) of human lung with ARIH2 polyclonal antibody (Cat # PAB29965) at 4-8 ug/mL working concentration.

## Specification

<b>Product Description</b>	Rabbit polyclonal antibody raised against synthetic peptide of human ARIH2.
<b>Immunogen</b>	A synthetic peptide corresponding to N-terminus of human ARIH2.
<b>Sequence</b>	EDYDPNCEEEEEEEEDDPGDIEDYYVGVASDVEQQGADAFDPPEEYQFTCL
<b>Host</b>	Rabbit
<b>Theoretical MW (kDa)</b>	58
<b>Reactivity</b>	Human
<b>Form</b>	Liquid

<b>Purification</b>	Protein A purification
<b>Recommend Usage</b>	Immunohistochemistry (Formalin/PFA-fixed paraffin-embedded sections) (4-8 ug/mL) Western Blot (2.5 ug/mL) The optimal working dilution should be determined by the end user.
<b>Storage Buffer</b>	In PBS (2% sucrose, 0.09% sodium azide).
<b>Storage Instruction</b>	Store at 4°C. For long term storage store at -20°C. Aliquot to avoid repeated freezing and thawing.
<b>Note</b>	This product contains sodium azide: a POISONOUS AND HAZARDOUS SUBSTANCE which should be handled by trained staff only.

## Applications

- Western Blot (Cell lysate)

Western Blot analysis of Jurkat cell lysate with ARIH2 polyclonal antibody (Cat # PAB29965) at 2.5 ug/mL working concentration.

- Immunohistochemistry (Formalin/PFA-fixed paraffin-embedded sections)

Immunohistochemical staining (Formalin-fixed paraffin-embedded sections) of human lung with ARIH2 polyclonal antibody (Cat # PAB29965) at 4-8 ug/mL working concentration.

## Gene Info — ARIH2

<b>Entrez GeneID</b>	<a href="#">10425</a>
<b>GeneBank Accession#</b>	<a href="#">NM_006321</a>
<b>Protein Accession#</b>	<a href="#">NP_006312;O95376</a>
<b>Gene Name</b>	ARIH2
<b>Gene Alias</b>	ARI2, FLJ10938, FLJ33921, TRIAD1
<b>Gene Description</b>	ariadne homolog 2 (Drosophila)
<b>Omim ID</b>	<a href="#">605615</a>
<b>Gene Ontology</b>	<a href="#">Hyperlink</a>
<b>Other Designations</b>	all-trans retinoic acid inducible RING finger ariadne homolog 2