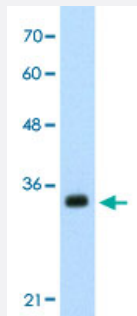


# APOBEC3D polyclonal antibody

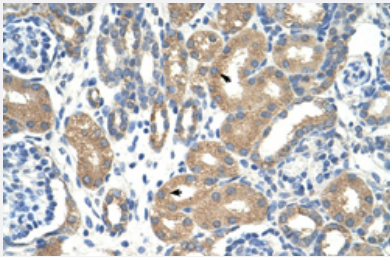
Catalog # PAB29963      Size 100 uL

## Applications



### Western Blot (Cell lysate)

Western Blot analysis of HepG2 cell lysate with APOBEC3D polyclonal antibody (Cat # PAB29963) at 0.2-1 ug/mL working concentration.



### Immunohistochemistry (Formalin/PFA-fixed paraffin-embedded sections)

Immunohistochemical staining (Formalin-fixed paraffin-embedded sections) of human kidney with APOBEC3D polyclonal antibody (Cat # PAB29963) at 4-8 ug/mL working concentration.

## Specification

Product Description	Rabbit polyclonal antibody raised against synthetic peptide of human APOBEC3D.
Immunogen	A synthetic peptide corresponding to N-terminus of human APOBEC3D.
Sequence	SYTWLCYEVKIKGRSNLLWDTGVFRGPVLPKRQSNHRQEVYFRFENHAE
Host	Rabbit
Theoretical MW (kDa)	30
Reactivity	Human
Form	Liquid

Purification	Affinity purification
Recommend Usage	Immunohistochemistry (Formalin/PFA-fixed paraffin-embedded sections) (4-8 ug/mL) Western Blot (0.2-1 ug/mL) The optimal working dilution should be determined by the end user.
Storage Buffer	In PBS (2% sucrose, 0.09% sodium azide).
Storage Instruction	Store at 4°C. For long term storage store at -20°C. Aliquot to avoid repeated freezing and thawing.
Note	This product contains sodium azide: a POISONOUS AND HAZARDOUS SUBSTANCE which should be handled by trained staff only.

## Applications

- Western Blot (Cell lysate)

Western Blot analysis of HepG2 cell lysate with APOBEC3D polyclonal antibody (Cat # PAB29963) at 0.2-1 ug/mL working concentration.

- Immunohistochemistry (Formalin/PFA-fixed paraffin-embedded sections)

Immunohistochemical staining (Formalin-fixed paraffin-embedded sections) of human kidney with APOBEC3D polyclonal antibody (Cat # PAB29963) at 4-8 ug/mL working concentration.

## Gene Info — APOBEC3D

Entrez GeneID	<a href="#">140564</a>
GeneBank Accession#	<a href="#">NM_152426</a>
Protein Accession#	<a href="#">NP_689639;Q96AK3</a>
Gene Name	APOBEC3D
Gene Alias	APOBEC3DE, APOBEC3E, ARP6
Gene Description	apolipoprotein B mRNA editing enzyme, catalytic polypeptide-like 3D
Omim ID	<a href="#">609900</a>
Gene Ontology	<a href="#">Hyperlink</a>

**Gene Summary**

This gene is a member of the cytidine deaminase gene family. It is one of a group of related genes found in a cluster, thought to result from gene duplication, on chromosome 22. Members of the cluster encode proteins that are structurally and functionally related to the C to U RNA-editing cytidine deaminase APOBEC1 and inhibit retroviruses, such as HIV, by deaminating cytosine residues in nascent retroviral cDNA. [provided by RefSeq]

**Other Designations**

DNA dC->dU-editing enzyme APOBEC-3D|apolipoprotein B mRNA editing enzyme, catalytic polypeptide-like 3E pseudogene