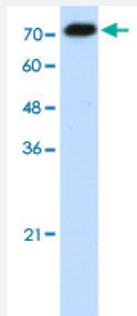


AKAP8L polyclonal antibody

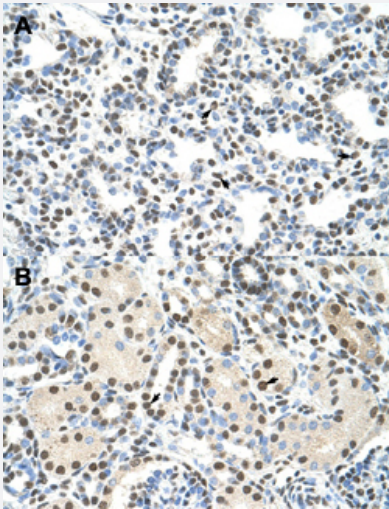
Catalog # PAB29956 Size 100 uL

Applications



Western Blot (Cell lysate)

Western Blot analysis of Jurkat cell lysate with AKAP8L polyclonal antibody (Cat # PAB29956) at 1.25 ug/mL working concentration.



Immunohistochemistry (Formalin/PFA-fixed paraffin-embedded sections)

Immunohistochemical staining (Formalin-fixed paraffin-embedded sections) of human lung (A) and human kidney (B) with AKAP8L polyclonal antibody (Cat # PAB29956) at 4-8 ug/mL working concentration.

Specification

Product Description	Rabbit polyclonal antibody raised against synthetic peptide of human AKAP8L.
Immunogen	A synthetic peptide corresponding to C-terminus of human AKAP8L.
Sequence	APGAVSPPPPPPEEEEEGAVPLLGGALQRQIRGIPGLDVEDDEEGGGA
Host	Rabbit

Theoretical MW (kDa)	72
Reactivity	Human
Form	Liquid
Purification	Protein A purification
Recommend Usage	Immunohistochemistry (Formalin/PFA-fixed paraffin-embedded sections) (4-8 ug/mL) Western Blot (1.25 ug/mL) The optimal working dilution should be determined by the end user.
Storage Buffer	In PBS (2% sucrose, 0.09% sodium azide).
Storage Instruction	Store at 4°C. For long term storage store at -20°C. Aliquot to avoid repeated freezing and thawing.
Note	This product contains sodium azide: a POISONOUS AND HAZARDOUS SUBSTANCE which should be handled by trained staff only.

Applications

- Western Blot (Cell lysate)

Western Blot analysis of Jurkat cell lysate with AKAP8L polyclonal antibody (Cat # PAB29956) at 1.25 ug/mL working concentration.

- Immunohistochemistry (Formalin/PFA-fixed paraffin-embedded sections)

Immunohistochemical staining (Formalin-fixed paraffin-embedded sections) of human lung (A) and human kidney (B) with AKAP8L polyclonal antibody (Cat # PAB29956) at 4-8 ug/mL working concentration.

Gene Info — AKAP8L

Entrez GeneID	26993
GeneBank Accession#	NM_014371
Protein Accession#	NP_055186;Q9ULX6
Gene Name	AKAP8L
Gene Alias	DKFZp434L0650, HA95, HAP95, NAKAP, NAKAP95
Gene Description	A kinase (PRKA) anchor protein 8-like
Omim ID	609475

Gene Ontology[Hyperlink](#)**Other Designations**

A-kinase anchor protein 8-like|helicase A-binding protein 95 kDa|neighbor of A kinase anchoring protein 95|neighbor of A-kinase anchoring protein 95