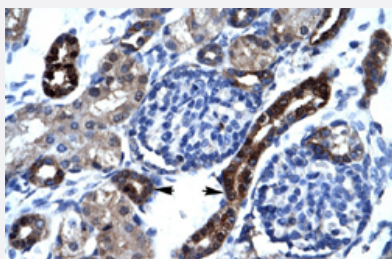


SFRS17A polyclonal antibody

Catalog # PAB29955 Size 100 uL

Applications



Immunohistochemistry (Formalin/PFA-fixed paraffin-embedded sections)

Immunohistochemical staining (Formalin-fixed paraffin-embedded sections) of human kidney with SFRS17A polyclonal antibody (Cat # PAB29955) at 4-8 ug/mL working concentration.

Specification

Product Description	Rabbit polyclonal antibody raised against synthetic peptide of human SFRS17A.
Immunogen	A synthetic peptide corresponding to N-terminus of human SFRS17A.
Sequence	NWEVMERLKGMVQNHQFSTLRISKSTMDFIRFEGEVENKSLVKSFLACLD
Host	Rabbit
Theoretical MW (kDa)	81
Reactivity	Human
Form	Liquid
Purification	Affinity purification
Recommend Usage	Immunohistochemistry (Formalin/PFA-fixed paraffin-embedded sections) (4-8 ug/mL) Western Blot (0.2-1 ug/mL) The optimal working dilution should be determined by the end user.
Storage Buffer	In PBS (2% sucrose, 0.09% sodium azide).

Storage Instruction

Store at 4°C. For long term storage store at -20°C.
Aliquot to avoid repeated freezing and thawing.

Note

This product contains sodium azide: a POISONOUS AND HAZARDOUS SUBSTANCE which should be handled by trained staff only.

Applications

- Western Blot (Cell lysate)
- Immunohistochemistry (Formalin/PFA-fixed paraffin-embedded sections)

Immunohistochemical staining (Formalin-fixed paraffin-embedded sections) of human kidney with SFRS17A polyclonal antibody (Cat # PAB29955) at 4-8 ug/mL working concentration.

Gene Info — SFRS17A

Entrez GeneID[8227](#)**GeneBank Accession#**[NM_005088](#)**Protein Accession#**[NP_005079:Q02040](#)**Gene Name**

SFRS17A

Gene Alias

721P, CCDC133, CXYorf3, DXYS155E, MGC125365, MGC125366, MGC39904, XE7, XE7Y

Gene Description

splicing factor, arginine/serine-rich 17A

Omim ID[312095 465000](#)**Gene Ontology**[Hyperlink](#)**Gene Summary**

O

Other Designations

B-lymphocyte surface antigen|DNA segment on chromosome X and Y (unique) 155 expressed sequence|OTTHUMP00000022833|pseudoautosomal gene XE7