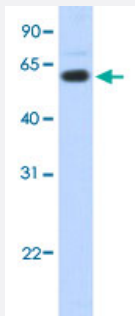


CDYL polyclonal antibody

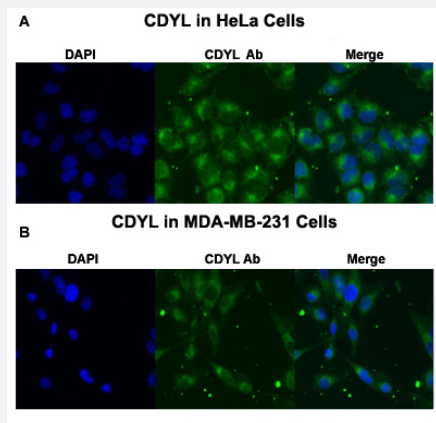
Catalog # PAB29937 Size 100 uL

Applications



Western Blot (Transfected lysate)

Western Blot analysis of transfected 293T cell lysate with CDYL polyclonal antibody (Cat # PAB29937) at 0.2-1 ug/mL working concentration.



Immunofluorescence

Immunofluorescent staining of HeLa (A) and MDA-MB-231 (B) cells with CDYL polyclonal antibody (Cat # PAB29937) at 4 ug/mL working concentration.

Specification

Product Description	Rabbit polyclonal antibody raised against synthetic peptide of human CDYL.
Immunogen	A synthetic peptide corresponding to N-terminus of human CDYL.
Sequence	YIHDFNRRHTEKQKESLTTRTNRTSPNNARKQISRSTNSNFSKTSPKALV
Host	Rabbit
Theoretical MW (kDa)	60

Reactivity	Human
Form	Liquid
Purification	Affinity purification
Recommend Usage	Immunofluorescence (4 ug/mL) Western Blot (0.2-1 ug/mL) The optimal working dilution should be determined by the end user.
Storage Buffer	In PBS (2% sucrose, 0.09% sodium azide).
Storage Instruction	Store at 4°C. For long term storage store at -20°C. Aliquot to avoid repeated freezing and thawing.
Note	This product contains sodium azide: a POISONOUS AND HAZARDOUS SUBSTANCE which should be handled by trained staff only.

Applications

- Western Blot (Transfected lysate)

Western Blot analysis of transfected 293T cell lysate with CDYL polyclonal antibody (Cat # PAB29937) at 0.2-1 ug/mL working concentration.

- Immunofluorescence

Immunofluorescent staining of HeLa (A) and MDA-MB-231 (B) cells with CDYL polyclonal antibody (Cat # PAB29937) at 4 ug/mL working concentration.

Gene Info — CDYL

Entrez GeneID	9425
GeneBank Accession#	NM_004824
Protein Accession#	NP_004815:Q9Y232
Gene Name	CDYL
Gene Alias	CDYL1, DKFZp586C1622, MGC131936
Gene Description	chromodomain protein, Y-like
Omim ID	603778
Gene Ontology	Hyperlink

Gene Summary

Chromodomain Y is a primate-specific Y-chromosomal gene family expressed exclusively in the testis and implicated in infertility. Although the Y-linked genes are testis-specific, this autosomal gene is ubiquitously expressed. The Y-linked genes arose by retrotransposition of an mRNA from this gene, followed by amplification of the retroposed gene. Proteins encoded by this gene superfamily possess a chromodomain, a motif implicated in chromatin binding and gene suppression, and a catalytic domain believed to be involved in histone acetylation. Multiple proteins are encoded by transcript variants of this gene. [provided by RefSeq]

Other Designations

CDY-like, autosomal|OTTHUMP00000015984|bA620A17.2 (chromodomain protein, Y chromosome-like)|chromodomain protein, Y chromosome-like|chromodomain protein, Y chromosome-like, isoform b|testis-specific chromodomain Y-like protein

Disease

- [Genetic Predisposition to Disease](#)
- [Thyroid Neoplasms](#)