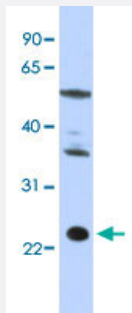


CENPM polyclonal antibody

Catalog # PAB29934 Size 100 uL

Applications



Western Blot (Cell lysate)

Western Blot analysis of HepG2 cell lysate with CENPM polyclonal antibody (Cat # PAB29934) at 0.2-1 ug/mL working concentration.

Specification

Product Description Rabbit polyclonal antibody raised against synthetic peptide of human CENPM.

Immunogen A synthetic peptide corresponding to internal region of human CENPM.

Sequence CDLEVEGFRATMAQRLVRVLQICAGHVPGVSA LNLLSLLRSSEGPSLEDL

Host Rabbit

Theoretical MW (kDa) 20

Reactivity Human

Form Liquid

Purification Affinity purification

Recommend Usage
Immunofluorescence
Western Blot (0.2-1 ug/mL)
The optimal working dilution should be determined by the end user.

Storage Buffer In PBS (2% sucrose, 0.09% sodium azide).

Storage Instruction

Store at 4°C. For long term storage store at -20°C.
Aliquot to avoid repeated freezing and thawing.

Note

This product contains sodium azide: a POISONOUS AND HAZARDOUS SUBSTANCE which should be handled by trained staff only.

Applications

- Western Blot (Cell lysate)

Western Blot analysis of HepG2 cell lysate with CENPM polyclonal antibody (Cat # PAB29934) at 0.2-1 ug/mL working concentration.

- Immunofluorescence

Gene Info — CENPM

Entrez GeneID[79019](#)**GeneBank Accession#**[NM_024053](#)**Protein Accession#**[NP_076958;Q9NSP4](#)**Gene Name**

CENPM

Gene Alias

C22orf18, CENP-M, MGC861, PANE1, bK250D10.2

Gene Description

centromere protein M

Omim ID[610152](#)**Gene Ontology**[Hyperlink](#)**Gene Summary**

The centromere is a specialized chromatin domain, present throughout the cell cycle, that acts as a platform on which the transient assembly of the kinetochore occurs during mitosis. All active centromeres are characterized by the presence of long arrays of nucleosomes in which CENPA (MIM 117139) replaces histone H3 (see MIM 601128). CENPM is an additional factor required for centromere assembly (Foltz et al., 2006 [PubMed 16622419]).[supplied by OMIM]

Other Designations

OTTHUMP00000028741|proliferation associated nuclear element 1

Disease

- [Genetic Predisposition to Disease](#)

- [Hematologic Diseases](#)
- [Occupational Diseases](#)